

# Indice Newsletter Alta Srl

(cliccare sul logo per andare alla pagina)



***Visita il nostro nuovo sito :***

**[www.altasrl.com](http://www.altasrl.com)**

# Novità PHOENIX CONTACT

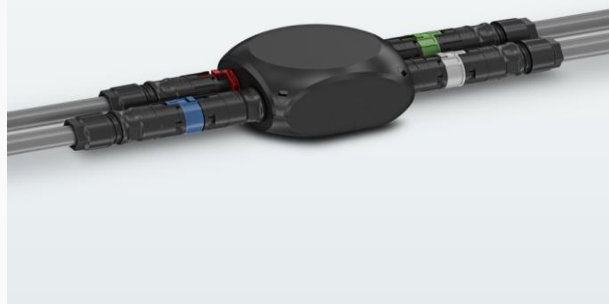


## Proteggere le applicazioni LED in modo sicuro

La tecnologia LED è diventata parte integrante della nostra vita quotidiana. I LED vengono impiegati anche per l'illuminazione stradale, di gallerie o di oggetti. Per un'infrastruttura sicura è essenziale che l'illuminazione funzioni in modo impeccabile.

Tuttavia, le sovracorrenti e le sovratensioni che si verificano nella rete possono superare in modo significativo la resistenza alle tensioni di dispositivi come le lampade a LED. Un guasto dell'illuminazione quindi può essere causato anche da fattori diversi dalla posizione esposta alle scariche atmosferiche. Per prevenire questi rischi, è necessario adottare un'efficace protezione contro la sovratensione.

[https://www.phoenixcontact.com/online/portal/it?1dmy&urile=wcm%3apath%3a/itit/web/corporate/press/press\\_information/7cc053bb-ca24-48ad-be67-d24111cc83a6](https://www.phoenixcontact.com/online/portal/it?1dmy&urile=wcm%3apath%3a/itit/web/corporate/press/press_information/7cc053bb-ca24-48ad-be67-d24111cc83a6)



## Alimentazione sicura e rapida dei dispositivi

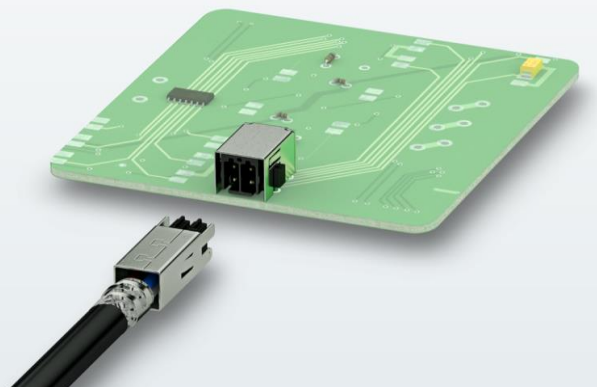
Phoenix Contact sta ampliando la gamma di applicazioni per i suoi connettori circolari in plastica PRC con distributori di energia preassemblati.

Le scatole di distribuzione sono resistenti alle intemperie e progettate con grado di protezione IP69. Ciò rende la gamma di prodotti particolarmente adatta per l'alimentazione di dispositivi per l'uso interno ed esterno.

Le versioni monofase dispongono di un ingresso tripolare e due uscite tripolari. I distributori trifase forniscono un ingresso a cinque poli e tre uscite a cinque poli. Un divisore di fase, anch'esso disponibile, consente la ripartizione di un ingresso trifase in tre uscite monofase. L'intera serie è progettata per correnti di dimensionamento fino a 32 A e tensioni di dimensionamento fino a 400 V (AC).

[https://www.phoenixcontact.com/online/portal/it?1dmy&urile=wcm%3apath%3a/itit/web/corporate/press/press\\_information/27fec175-4f4e-4950-a98f-0268f0c2ea4f](https://www.phoenixcontact.com/online/portal/it?1dmy&urile=wcm%3apath%3a/itit/web/corporate/press/press_information/27fec175-4f4e-4950-a98f-0268f0c2ea4f)

# Novità PHOENIX CONTACT



## Connettori per circuiti stampati a doppia fila

I connettori per circuiti stampati schermati completano la gamma di prodotti Phoenix Contact con passo 2,54 mm.

Grazie alla loro schermatura EMC, i connettori a doppia fila della serie DMCC consentono un'alimentazione affidabile dei dispositivi con dati e potenza - anche su un singolo cavo Ethernet (PoE).

I connettori a crimpare sono adatti per sezioni del conduttore da 0,14 a 0,75 mm<sup>2</sup> e sono progettati per una massimo di 6 A / 160 V. Con le loro dimensioni compatte, i connettori bipolari con quattro contatti offrono la soluzione per le applicazioni in spazi ridotti. L'utensile, disponibile su richiesta, consente la crimpatura manuale o automatica.

<https://www.phoenixcontact.com/online/portal/it?1dmy&urile=wcm%3apath%3a/itit/web/corporate/press/press-information/f6bfe586-5d02-4d5f-bf9d-8351fdaacdca>



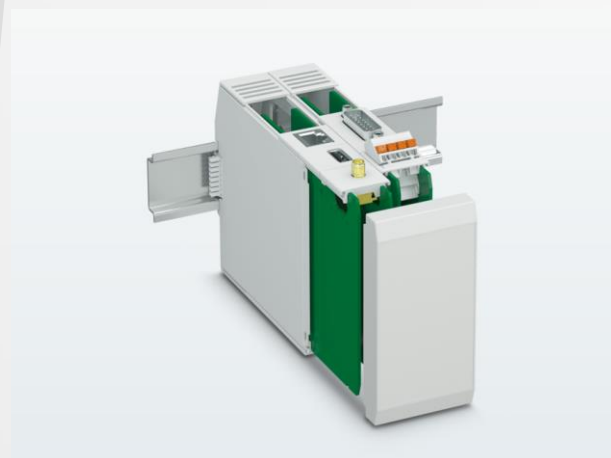
## Nuove varianti di tensione sotto 100 W

Gli alimentatori Quint Power di Phoenix Contact con range di potenza fino a 100 W sono ora disponibili anche con tensioni speciali di 5 V e 12 V. I tre nuovi alimentatori monofase (5 V DC con 5 A; 12 V DC con 2,5 A e 7,5 A) completano la gamma di prodotti, che finora forniva dispositivi a 24 V con range di potenza fino a 100 W.

Con le loro dimensioni ridotte, gli alimentatori di corrente offrono un'elevata disponibilità dell'impianto anche nella gamma a basso range di potenza, con monitoraggio preventivo delle funzioni e riserva di potenza. Avviate carichi pesanti con il boost dinamico che fornisce fino al 200 percento della potenza nominale per 5 s ed espandete i vostri impianti in modo semplice con il boost statico che fornisce fino al 125 percento della potenza nominale in modo permanente.

<https://www.phoenixcontact.com/online/portal/it?1dmy&urile=wcm%3apath%3a/itit/web/corporate/press/press-information/30a3b9f7-fbd3-4a6d-bb8e-8c3c5b35e393>

# Novità PHOENIX CONTACT



## Custodie per l'elettronica per dispositivi potenti

Phoenix Contact offre ora le sue custodie modulari per guide DIN della serie ICS anche con una larghezza costruttiva di 50 mm. Le nuove custodie per l'elettronica possono ospitare fino a quattro circuiti stampati e sono quindi adatte a concetti di automazione ancora più potenti come i gruppi I/O.

I connettori bus per guide DIN consentono una semplice comunicazione da modulo a modulo. L'intera serie comprende ora le larghezze costruttive di 20, 25 e 50 mm e le altezze di 77, 100 e 122 mm.

[https://www.phoenixcontact.com/online/portal/it?1dmy&urile=wcm%3apath%3a/itit/web/corporate/press/press\\_information/696df7ab-efce-4ffe-8e42-fad4f508b413](https://www.phoenixcontact.com/online/portal/it?1dmy&urile=wcm%3apath%3a/itit/web/corporate/press/press_information/696df7ab-efce-4ffe-8e42-fad4f508b413)



## Nuovi Unmanaged Switch per Profinet e Ethernet/IP

Phoenix Contact lancia sul mercato due nuovi Unmanaged Switch per EtherNet/IP e Profinet.

I prodotti con il suffisso "PNE" sono progettati per applicazioni di automazione in cui i dati di Profinet ed EtherNet/IP sono prioritari rispetto ad altri pacchetti Ethernet.

Oltre ad offrire lo stesso Multicast Filtering dei precedenti PROFINET Switch (varianti PN), supportano anche la speciale prioritizzazione UDP del traffico dati Ethernet/IP. Gli switch consentono all'utente la perfetta integrazione senza ulteriori configurazioni.

[https://www.phoenixcontact.com/online/portal/it?1dmy&urile=wcm%3apath%3a/itit/web/corporate/press/press\\_information/e866091c-7736-42ce-bda8-00f5fd516f91](https://www.phoenixcontact.com/online/portal/it?1dmy&urile=wcm%3apath%3a/itit/web/corporate/press/press_information/e866091c-7736-42ce-bda8-00f5fd516f91)

# Novità PHOENIX CONTACT



## Connessione dei sensori rapida e a ingombro minimo

I nuovi morsetti attuatori/iniziatori PTIO 1,5 di Phoenix Contact, larghi solo 3,5 mm, sono particolarmente adatti per il cablaggio dei moderni controllori delle macchine. Offrono la possibilità di connettere sensori con due uscite segnale con un notevole risparmio di spazio.

Tutti i sensori bipolari, compresi i PE, vengono cablati su un solo morsetto componibile. Grazie alla tecnologia ad innesto diretto Push-in, che non necessita l'utilizzo di utensili, i morsetti componibili PTIO offrono anche una connessione conduttori rapida.

[https://www.phoenixcontact.com/online/portal/it?1dmy&urile=wcm%3apath%3a/itit/web/corporate/press/press\\_information/878ed974-20d1-473f-a760-67cff0666900](https://www.phoenixcontact.com/online/portal/it?1dmy&urile=wcm%3apath%3a/itit/web/corporate/press/press_information/878ed974-20d1-473f-a760-67cff0666900)

# Novità TE CONNECTIVITY



## M12 X-CODE FIELD INSTALLABLE CABLE PLUG

- Fast, error-free installation because reliable IDC contacts, automatic wire cut-off function integrated in the connector and tool-less installation
- Terminates most common wire sizes - AWG22-24-26, solid and stranded; Outer Cable Diameter 6.0mm..9.0mm

With TE Connectivity's latest M12 X-code Field Installable Connector, Installers and Machinery makers can make a Cat6A connection termination error free and tool-less, faster than alternative standard data connector solutions

[http://images.connections.te.com/Web/Tyc\\_oElectronicsCorporation/%7B522cdcf3-b3d7-4090-a816-73a172006178%7D\\_M12-X-Code-FI-Cable-v2.pdf?te\\_bu=Ind&te\\_type=email&te\\_campaign=elq\\_glo\\_ind-elq-global-email-fy20-q2-m12-x-code-cf\\_sma-1470\\_2](http://images.connections.te.com/Web/Tyc_oElectronicsCorporation/%7B522cdcf3-b3d7-4090-a816-73a172006178%7D_M12-X-Code-FI-Cable-v2.pdf?te_bu=Ind&te_type=email&te_campaign=elq_glo_ind-elq-global-email-fy20-q2-m12-x-code-cf_sma-1470_2)



## THE TERMINAL STRIP CUTTER

- Ergonomically designed to manage a variety of terminal configurations and sizes
- Incorporates simple precision adjustment features to accommodate side-feed, front-carrier terminal strips of varying sizes

**Guarda il video :**

[https://www.youtube.com/watch?v=xQzaK6\\_hMH4](https://www.youtube.com/watch?v=xQzaK6_hMH4)

**Scarica il data sheet :**

[https://www.te.com/content/dam/te-com/documents/application-tooling/global/RSG-Materials/terminal\\_cutter-card.pdf?logActivity=true](https://www.te.com/content/dam/te-com/documents/application-tooling/global/RSG-Materials/terminal_cutter-card.pdf?logActivity=true)

# Novità TE CONNECTIVITY



## GNSS ANTENNAS

Our standard portfolio of GNSS Antennas makes positioning wireless connections more reliable by using a range of multi-band antennas for individual device configuration. They are ideal for wireless audio, smart home products, industrial and smart home appliances, and desktop computers.

TE Connectivity's GNSS antennas address key design goals:

- Deliver efficiency, bandwidth, and precision
- Reduce antenna size
- Save costs with minimum associated components
- Support multi-band and multi-standard designs

[https://www.te.com/us-en/products/antennas/intersection/gnss-positioning.html?te\\_bu=Cor&te\\_type=email&te\\_campaign=elq\\_usa\\_cor-elq-usa-email-selectmktg-fy20gnssantennas\\_sma-1345\\_1&elqCampaignId=85120&tab=pq-story](https://www.te.com/us-en/products/antennas/intersection/gnss-positioning.html?te_bu=Cor&te_type=email&te_campaign=elq_usa_cor-elq-usa-email-selectmktg-fy20gnssantennas_sma-1345_1&elqCampaignId=85120&tab=pq-story)



## M12 INDUSTRIAL ETHERNET CABLE ASSEMBLY CONNECTIVITY

- TE M12 Ethernet cable assemblies deliver the speed, reliability and ruggedness that smart factories demand.
- With the high cost of downtime in industrial applications, it pays to invest in cable assemblies that provide reliable high performance.

TE Connectivity now offers M12 data cable assemblies that support Ethernet protocols as part of its package of Industrial Ethernet and Fieldbus solutions. This makes it the one-stop shop for M8/M12 cable assemblies for Industrial Network communications.

[http://images.connections.te.com/Web/Tyc oElectronicsCorporation/%7B384878c2-3f14-43cd-9089-31dec1308572%7D\\_eCard-IND-M12-Ethernet-cac.pdf?te\\_bu=Ind&te\\_type=email&te\\_campaign=elq\\_glo\\_ind-elq-global-email-fy20-q2-m12-ethernet-cac-cf\\_sma-1452\\_2](http://images.connections.te.com/Web/Tyc oElectronicsCorporation/%7B384878c2-3f14-43cd-9089-31dec1308572%7D_eCard-IND-M12-Ethernet-cac.pdf?te_bu=Ind&te_type=email&te_campaign=elq_glo_ind-elq-global-email-fy20-q2-m12-ethernet-cac-cf_sma-1452_2)

# Novità TE CONNECTIVITY



## TE Connectivity's Updated New Product Application Guide

TE Connectivity's (TE) market-defining technologies and engineering expertise are setting the pace for the future of connectivity. Our updated New Product Application Guide provides a quick view of how TE's newest products provide solutions across a range of market-leading applications.

**Scarica direttamente il catalogo con tutti i nuovi prodotti divisi per settore :**

<https://www.te.com/content/dam/te-com/documents/channel/global/newproductapplicationguide.pdf>



## DiBo+ EV Charger Type 1 Cable Assembly

TE Connectivity's (TE) EV charging cable assemblies for Type 1 have a new and improved housing design with an ergonomically designed handle. The EV charging cable assemblies are capable of high mating cycle requirements, with testing completed to 10,000 mating cycles.

Target Applications

- Type 1 Electric Vehicle Charging Cable Assembly
- EV Charging Stations

Target Markets

- Electrical Vehicle Market

<https://learningconnection.te.com/campaigns/view.asp?i=djq08wkwzazzk2>



# Novità TE CONNECTIVITY



## TE DEFECTIVE CRIMP CUT BENCH TOP TERMINATOR

It's very important that bad crimps don't accidentally pass inspection and make their way into future stages of a wire harness manufacturing process. TE Connectivity (TE) has come up with a new defective crimp cut terminator which locates and eliminates bad crimps which could slow down production.

Defective crimp cut technology is now available on both 5K and GII terminator models. With the help of a Crimp Quality Monitor (CQM II) and defective crimp cut technology, the terminator analyzes and cuts-off the bad crimps right when they happen, thereby eliminating the possibility of defective crimps passing inspection.

[https://www.te.com/content/dam/te-com/documents/application-tooling/global/RSG-Materials/defective-crimp-terminator-e-card.pdf?logActivity=true&te\\_bu=App&te\\_type=email&te\\_campaign=elq\\_glo\\_gat-elq-global-email-fy20\\_qatd\\_ter\\_emeame\\_cf\\_p\\_sma-1508\\_2](https://www.te.com/content/dam/te-com/documents/application-tooling/global/RSG-Materials/defective-crimp-terminator-e-card.pdf?logActivity=true&te_bu=App&te_type=email&te_campaign=elq_glo_gat-elq-global-email-fy20_qatd_ter_emeame_cf_p_sma-1508_2)



## LUMAWISE TYPE Z LED HOLDERS

TE Connectivity's (TE) LUMAWISE Type Z LED Holders provide a quick and easy solderless connection to Chip-on-Board (CoB) LED arrays and are designed to enable customers to develop Zhaga compliant modules. Standard and low-profile Type Z50 LED holders feature snap-in LED retention that secures the LED in the holder during assembly and establishes proper positioning in the fixture. Offered with or without the optic attachment features, the Type Z LED holders are available in a configuration to suit your needs. The optics attachment version functions with LEDiL optics to provide the lighting designer with beam shaping flexibility in spot and downlight applications.

[http://images.connections.te.com/Web/TycoElectronicsCorporation/%7Bcc60fda2-fd19-49a0-ba2e-b8b359f63b90%7D\\_LEDiL-eCard\\_Final-Updated.pdf?te\\_bu=Ind&te\\_type=email&te\\_campaign=elq\\_glo\\_ind-elq-global-email-fy20-q2-lum-ledil-h-cf-update\\_sma-1454\\_10](http://images.connections.te.com/Web/TycoElectronicsCorporation/%7Bcc60fda2-fd19-49a0-ba2e-b8b359f63b90%7D_LEDiL-eCard_Final-Updated.pdf?te_bu=Ind&te_type=email&te_campaign=elq_glo_ind-elq-global-email-fy20-q2-lum-ledil-h-cf-update_sma-1454_10)

# Novità TE CONNECTIVITY



## BATTU Dual Wall Heat Shrink Tubing

TE Connectivity introduces its new BATTU dual wall heat shrink tubing product line. This new flame-retardant, adhesive-lined tubing product was specifically designed for power cable to terminal applications in harsh environments. It is made from a polyolefin jacket with a thermoplastic adhesive inner wall and provides excellent electrical isolation, mechanical protection and moisture-resistance. This semi-rigid tubing offers additional strain relief to the crimp area and it withstands operating temperatures up to 130°C.

- Commercial Vehicles
- Industrial Vehicles
- Consumer Marine Equipment
- Construction/Agriculture Equipment
- Generator Sets
- Recreational Vehicles
- Military Vehicles
- Automobiles
- Industrial Machinery
- Transportation



## Ethernet Jacks with Integrated Magnetics and PoE

Ethernet jacks with integrated magnetics and power over ethernet (PoE) from TE Connectivity (TE) offer a highly integrated connectivity PCB solution for Industrial Ethernet applications. Using a 3-wire choke improves EMI performance and allows for remote powering of peripherals over the Ethernet cable. The new jacks comply to the IEEE 802.3at (PoE+) standard, which supports up to 25.5W of power per ports. The Ethernet jacks support an industrial temperature range and can be used in reflow soldering production processes at 260°C for easy and cost-effective manufacturing.

- Industrial Communications & Ethernet
- Industrial Machinery
- Industrial Production Equipment
- Automated Test Equipment
- Industrial Production Equipment with need for remote powering
- Industrial Test Equipment with need for remote powering
- Industrial Machinery with need for remote powering

# Novità TE CONNECTIVITY

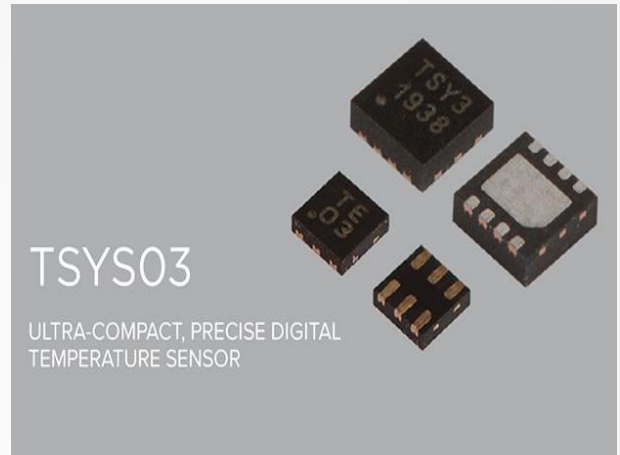


## INDUSTRIAL RESOLVERS FOR MORE RELIABILITY AND HIGH PRECISION

- Reliability and high precision with low space requirements
- Fully operable even under extreme environmental conditions.

TE Connectivity offers an industrial resolver portfolio which can be connected with a wide range of servo motor connectors and sensor applications. This allows for customization and greater flexibility for customers. The use of sensors for high-precision angular position measurement in small spaces increases with progressive automation.

[http://images.connections.te.com/Web/TycoElectronicsCorporation/%7B911c7e59-8353-4e5b-893e-fe0c892845f9%7D\\_eCard-Resolver-Value-Line-v1.pdf?te\\_bu=Ind&te\\_type=email&te\\_campaign=elq\\_glo\\_ind-elq-global-email-fy20-q2-resolver-line-cf\\_sma-1485\\_2](http://images.connections.te.com/Web/TycoElectronicsCorporation/%7B911c7e59-8353-4e5b-893e-fe0c892845f9%7D_eCard-Resolver-Value-Line-v1.pdf?te_bu=Ind&te_type=email&te_campaign=elq_glo_ind-elq-global-email-fy20-q2-resolver-line-cf_sma-1485_2)



TSYS03

ULTRA-COMPACT, PRECISE DIGITAL TEMPERATURE SENSOR

## Ethernet Jacks with Integrated Magnetics and PoE

- Enable ultra-compact design with two different packages namely, TDFN8 and XDFN6
- Offer factory calibrated digital output with configurable I<sup>2</sup>C Interface

Today, industrial, consumer or even medical sectors are adopting digitalization to collect sensor data. TE Connectivity (TE) has developed a new digital temperature sensor called TSYS03 to meet these needs. With its industry leading ultra-compact size of 1.5 x 1.5 mm, the TSYS03 enables lower thermal response time, offering an ideal solution for precise temperature sensing in applications with space constraints.

[https://www.te.com/content/dam/te-com/documents/sensors/global/Channel/tsyminiature-ecard.pdf?te\\_bu=Sen&te\\_type=email&te\\_campaign=elq\\_glo\\_sen-elq-global-email-fy20\\_tess\\_tsys03\\_cust\\_fac\\_p\\_sma-1362\\_2](https://www.te.com/content/dam/te-com/documents/sensors/global/Channel/tsyminiature-ecard.pdf?te_bu=Sen&te_type=email&te_campaign=elq_glo_sen-elq-global-email-fy20_tess_tsys03_cust_fac_p_sma-1362_2)

# Novità TE CONNECTIVITY



## SNK Series Terminal Blocks

The innovative SNK Series Terminal blocks range offers three exclusive connection technologies include the heavy duty screw-clamp technology, the patented PI-Spring technology (Push-In and Spring) and the "plug & play" pluggable technology.

The SNK series is specially designed to ease panels manufacturing and provides significant productivity savings at all steps of a project from design to assembling, maintenance and logistics.

The range features common accessories and is qualified for worldwide applications and severe environments such as hazardous locations, railways, marine and solar applications.

- Electrical Panels/Cabinets
- Junction Boxes
- Switchgear
- Combiner Boxes (Solar)



## 8911

COMPACT, LoRaWAN™ WIRELESS ACCELEROMETER WITH EDGE COMPUTING FOR CONDITION MONITORING APPLICATIONS

## 8911 WIRELESS ACCELEROMETER FOR CONDITION MONITORING

- Utilize LoRaWAN™ - low power, wide-area networking protocol with reliable long-range wireless communication
- Provide ambient temperature and FFT calculations, transmitting only the relevant data within the network

Customers need a low cost, reliable method for health monitoring of critical machinery. Wireless sensors for condition monitoring help companies get the most from their assets by minimizing downtime and reducing installation costs. To provide this level of performance, TE Connectivity (TE) has designed the 8911 wireless accelerometer.

[https://www.te.com/content/dam/te-com/documents/sensors/global/Channel/8911-ecard.pdf?logActivity=true&te\\_bu=Sen&te\\_type=email&te\\_campaign=elq\\_glo\\_sen-elq\\_global-email-fy20\\_tess\\_8911\\_cf\\_p\\_sma-1162\\_2](https://www.te.com/content/dam/te-com/documents/sensors/global/Channel/8911-ecard.pdf?logActivity=true&te_bu=Sen&te_type=email&te_campaign=elq_glo_sen-elq_global-email-fy20_tess_8911_cf_p_sma-1162_2)

# Novità TE CONNECTIVITY



## TE P-Clamp: Enabling Next Generation Assembly

TE Connectivity (TE) P-Clamp provides a light, fast, and efficient solution to mounting cable harnesses. TE P-Clamp sizes (10) cover the full cable diameter range of (21) AS21919 P-Clamp sizes.

Faster install times and lighter weight give TE P-Clamps a lower applied cost than standard AS21919 P-Clamps. In addition, TE P-Clamps with lock and mounting features offer engineers the flexibility to rethink the way electrical and fluid systems are configured. Engineered with separate mounting and locking features, they can be installed earlier in the assembly process compared to standard AS21919 P-Clamps.

[https://www.te.com/commerce/DocumentDelivery/DDEController?Action=srchrtv&DocNm=2361061-1\\_te-pclamp&DocType=DS&DocLang=EN](https://www.te.com/commerce/DocumentDelivery/DDEController?Action=srchrtv&DocNm=2361061-1_te-pclamp&DocType=DS&DocLang=EN)



## MULTIGIG RT Connector

MULTIGIG RT Connectors are engineered to provide the world's most demanding environments a rugged, reliable, high-speed, board-to-board connection that is upgradable for the needs of the future. MULTIGIG RT connectors are part of a TE VPX portfolio that includes Digital, RF, XMC 4, Power and Fiber Optics.

### Target Applications

- Embedded computing - with standard layout for 3U and 6U configurations
- Backplanes
- Plugin modules

### Target Markets

- Military applications
- Missile and ground defense
- Commercial and military aerospace
- Space exploration
- Satellite

# Novità TE CONNECTIVITY



## Introducing New TV-8 Rated OJT Series Power Relays

Does your design require high inrush capability? Looking to save valuable space on the PCB?

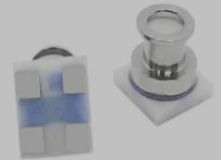
The need to embed more functionality into smaller spaces is becoming a requirement as engineers are designing new applications. Our new 10A TV-8 rated OJT power relays offer a compact and powerful design solution that can withstand up to a 117A inrush current in a 40% smaller size, compared to similarly rated relays.

Our 15.2mm (H) design is UL TV-8 rated to comply with global industry safety standards for high inrush applications. The UL TV-8 rating enables OJT 10A TV-8 relays to be used in devices that have high inrush current when the switch is turned on - helping ensure safety and reliability.

With 5 through 24 volt versions available, our 10A TV-8 rated OJT relays are designed to be used in the following applications: Lighting (indoor) - Smart plugs - Major home appliances – HVAC - Industrial control - Industrial machinery – Motors – Printers - Power supply controls.

## MS5839

ULTRA-COMPACT, CHLORINE RESISTANT,  
DIGITAL PRESSURE AND TEMPERATURE SENSOR



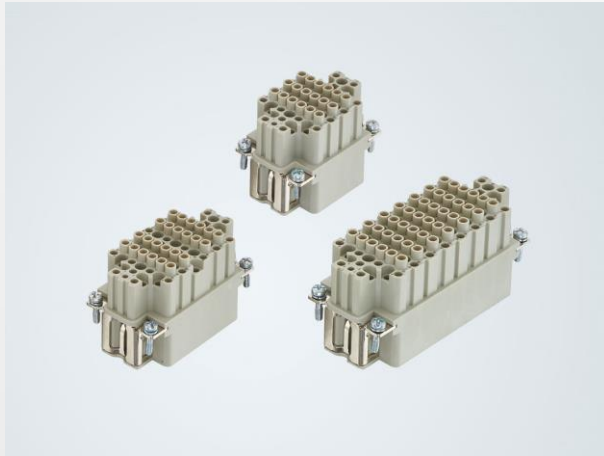
## MS5839 CHLORINE RESISTANT PRESSURE AND TEMPERATURE SENSOR

- Enable ultra-compact design with robust gel-filled construction suitable for harsh media environments
- Offer both pressure and temperature combination sensing with precise 24-bit digital output and I<sup>2</sup>C Interface

Miniaturization, performance and precision are key for sensors embedded in consumer devices like swim watches and diving equipment. Expanding on TE Connectivity's (TE) portfolio of ultra-compact digital altimeters, our MS5839 2 bar model is designed to meet the next generation of device manufacturer designs and challenges.

<https://www.te.com/content/dam/te-com/documents/sensors/global/Channel/ms5839-ecard.pdf>

# Novità HARTING



## Han® DDD: Strong signal transmission with minimum space requirements

With multi-pole signal interfaces for robots and automatic machines, the protective earth connection often plays a special role. It requires major parts of installation time. Thus, HARTING has increased the contact density of the inserts of the Han D® series for power and signal transmission. While the power and signal contacts of these series are equipped with crimp terminals – therefore ideally suited for prefabrication in large quantities while maintaining high quality – the PE contact has so far been implemented exclusively as screw terminal for application in the field. The new Han DDD® insert for the first time uses PE cavities requiring Han D® crimp contacts. Reduction of assembly time and costs

<https://www.harting.com/DE/en-gb/news/product/han-ddd-strong-signal-transmission-with-minimum-space-requirements>



## Han® 1A: miniaturised, modular and multifunctional

The Han® 1A offers a compact, robust and universally deployable rectangular connector system for transmission in all lifelines of Industry 4.0 (data, power, signals). Users can use it in conjunction with low inventory to produce all necessary interfaces, e.g. for small to medium-sized drives.

With its Han® 1A, HARTING follows the trend towards miniaturisation in the industrial sector. Smaller and smaller drives are also requiring smaller and smaller interfaces, e.g. in engineering and robotics. The new connector series reflects the trend with matching housings and inserts. The necessary shielding for the motor connection can also be achieved with Han® 1A plastic connectors.

<https://www.harting.com/DE/en-gb/news/product/han-1a-miniaturised-modular-and-multifunctional>

# Novità HARTING

## HARTING Product Information: nuovi set di custodie in plastica con viti di bloccaggio zigrinate

Con la presente informiamo che è stato sviluppato un nuovo design per le custodie in plastica e plastica metallizzata con bloccaggio a vite.

In precedenza le custodie venivano fornite con viti di bloccaggio corte e venivano offerte, come ricambio, viti di bloccaggio zigrinate lunghe.

Con il nuovo design, studiato per rendere il tutto più robusto e compatto, le viti vengono inserite a scatto nella custodia. In questo modo, le viti risultano impercettibili, ma non possono essere sostituite.

E' in previsione la fornitura di custodie con viti di bloccaggio lunghe zigrinate.

Di seguito tabella dei PNs:

Tipo di custodia	PN con viti di bloccaggio corta	PN con viti di bloccaggio zigrinata lunga
Custodia plastica con viti di bloccaggio UNC 4-40	09 67 0xx 0442	09 67 0xx 0432
Custodia plastica con viti di bloccaggio M3	09 67 0xx 0482	09 67 0xx 0492
Custodia plastica metallizzata con viti di bloccaggio UNC 4-40	09 67 0xx 0443	09 67 0xx 0433
Custodia plastica metallizzata con viti di bloccaggio M3	09 67 0xx 0423 09 67 0xx 0483	09 67 0xx 0493
Custodia plastica metallizzata con viti di bloccaggio M2,6	09 67 0xx 0484	09 67 0xx 0494

PN esistenti, presenti ancora nel portfolio

PN esistenti che verranno rimpiazzati

PN nuovi, xx= 09,15,25,37 o 50

I disegni 3D verranno presto modificati nel catalogo e nell' e-business. Le viti di bloccaggio zigrinate lunghe 09 67 000 9925 e 09 67 000 9930 verranno discontinue poiché non sarà più possibile utilizzarle come pezzo di ricambio.



# Novità YAMAICHI



## Spring Probe Pins for Pitch 2.54 mm

Yamaichi Electronics is well known for high precision in contacting fine and ultra-fine pitch devices from 0.25mm onwards.

To overcome the market needs in testing assembled PCBs, Yamaichi provides now also spring probe pins for the in-circuit test (ICT) with pitches of 2.54mm. With the help of in-house production, it is possible to manufacture nearly all geometric shapes. Currently, there is a range of more than 30 different plunger tips already available.

All pins are compatible with existing receptacles on the market.

<https://www.yamaichi.de/products/test-solutions/y-eti-test-fixture/ict-spring-probe-pins.html>

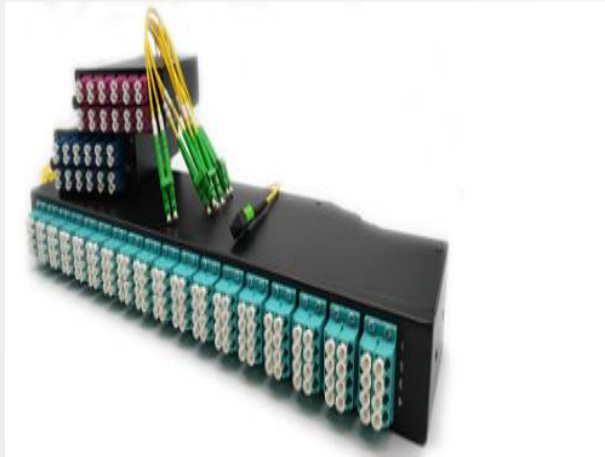


## M12 Connector with Push-Pull Inner Locking Mechanism

- Identical space requirement as M12 connector with screw locking - this allows maximum flexibility of your application
- Time saving up to 75% compared with usual screw locking
- Blind plugging: reliable locking also in applications with reduced space and poor visibility
- Tool-free contacting without use of a torque wrench
- 100% backward compatible: the Push-Pull wall-mount socket fits with usual screw lock connectors
- Long latches lock deeply inside enabling maximum robustness even under torsional load
- IP65/67-proof, also together with screw lock connectors
- Meets the M12 specification IEC CDV 61076-2-012

<https://www.yamaichi.de/products/connector-solutions/m12-circular-connectors-y-circ-m/m12-push-pull.html>

# Novità CPE



## Fiber Optics

<https://www.cpeitalia.it/fiber-optics-area/>



## Defense

<https://www.cpeitalia.it/defense-area/>



## Microwaves

<https://www.cpeitalia.it/microwaves-area/>



## Site Solutions

<https://www.cpeitalia.it/site-solutions-area/>

# Novità SOURIAU



## SOURIAU's composite connectors for aeronautics REACH Compliant

SOURIAU-SUNBANK Connection Technologies announced this month that its composite D38999 connectors are now completely REACH-compliant, with an alternative to hexavalent chromium having been rolled out since last year.

<https://www.souriau.com/en-en/souriau-sunbanks-composite-connectors-aeronautics-reach-compliant>

# EATON

*Powering Business Worldwide*

## SOURIAU-SUNBANK joins Eaton

On December 20, Eaton - a power management company, completed the acquisition of SOURIAU-SUNBANK Connection Technologies.

Eaton, headquartered in Dublin, Ireland, specializes in electrical and mechanical power for key industries including transportation, energy and healthcare. SOURIAU-SUNBANK joins the group's already 101,000 employee-strong organization as part of Eaton's Aerospace Group with over 100 years of experience and knowledge in interconnect solutions. We look forward to a new chapter of growth and opportunities alongside our Eaton colleagues and are convinced the union will deliver excellence to our customers and our employees as well as support our communities.

<https://www.souriau.com/en-en/souriau-sunbank-joins-eaton>

# Novità SOURIAU



## Digitalising our oceans to monitor and protect them

Most current marine monitoring technologies are used for a wide variety of purposes, and depend on electric-powered tools and equipment. However a new wave of innovation is pushing back the limits of what is currently possible and promises exciting opportunities to refine and improve the information we will be able to collect, and also deliver more powerful analysis capabilities.

SOURIAU, world leader in interconnect solutions for harsh environments, introduces the SWIM harnesses and connectors, especially designed for immersion up to 300m.

<https://www.souriau.com/en-en/digitalising-our-oceans-monitor-and-protect-them>

# Novità PANDUIT



## Riduci i costi nelle applicazioni pesanti

Panduit ha arricchito la gamma di connettori di potenza e messa a terra.

- Connettori di Potenza a compressione in rame
- Connettori a compressione e di messa a terra
- Accessori e prodotti in bronzo silicio e acciaio inossidabile

Questi nuovi prodotti completano le soluzioni Panduit dedicate al mercato dei main contractor e MRO. Le nuove soluzioni consentono di offrire ai clienti finali numerosi vantaggi installativi e competitive e includono anche la serie MLT in acciaio per l'identificazione, come le targhette in acciaio con stampa a rilievo, capicorda, gli accessori per la sicurezza industriale, gli accessori per antiabrasione, le fascette e altri accessori per l'installazione e la gestione del cavo.

### Scarica la guida :

[https://www.panduit.com/content/dam/panduit/en/general/newsletters/2019/q4/Industrial-Electrical-Solutions-eGuide.pdf?mkt\\_tok=eyJpIjoiWkdRMU16VmZekF3WmpZMCIslInQiOiJvdW9VREpGZEVla1lDQnY4MVEwVlZ4eURFT2owMVVGYkZjcUFhNVRhU0tGQXhITWQ2azNid2s1NXNXdHNOajlzYm50TkhKb3M3WFFiYUVNeVJJWWZpQT09In0%3D](https://www.panduit.com/content/dam/panduit/en/general/newsletters/2019/q4/Industrial-Electrical-Solutions-eGuide.pdf?mkt_tok=eyJpIjoiWkdRMU16VmZekF3WmpZMCIslInQiOiJvdW9VREpGZEVla1lDQnY4MVEwVlZ4eURFT2owMVVGYkZjcUFhNVRhU0tGQXhITWQ2azNid2s1NXNXdHNOajlzYm50TkhKb3M3WFFiYUVNeVJJWWZpQT09In0%3D)

# Novità PANDUIT



## Il Data Center di domani, oggi

Le tecnologie dirompenti stanno cambiando il modo di progettare il data center e la relativa infrastruttura di rete, creando nuove aspettative. Tra le maggiori richieste vi sono: informazioni più veloci, aumento della larghezza di banda, più sicurezza, riduzione del capitale e naturalmente un'impronta ecologica sostenibile. Per anticipare il potenziale impatto economico previsto di 14 trilioni di dollari entro il 2025, è necessario discutere già da ora come progettare prodotti e soluzioni per il futuro.

- Rack, armadi, accessori di gestione cavo, tutto in un colore del tutto esclusivo: il BIANCO
- Soluzione in fibra ottica Panduit HD Flex per pavimento / cablaggio di zona
- Armadi da parete Panduit HD Fusion
- Estensioni della linea di prodotti in fibra ottica Panduit HD Flex



## Wall Mount Splice Enclosure

Panduit presenta una nuova soluzione per la connettività in fibra ottica che offre il doppio delle connessioni in ambiente industriale. L'armadio con montaggio a parete HD Fusion, risponde infatti alle esigenze di connettività ottica ad alta densità. L'armadio è in grado di alloggiare un numero elevato di cavi in fibra ottica provenienti dall'esterno dell'edificio che transitano verso cavi di numero più ridotto verso il data center, colocation o hyperscale.

Vantaggi della soluzione:

- Tempi di installazione in campo notevolmente ridotti senza compromessi sulla versatilità
- Elevata modularità per una maggiore flessibilità

[https://pages.panduit.com/Wall\\_Mount\\_Splice\\_Enclosure.html](https://pages.panduit.com/Wall_Mount_Splice_Enclosure.html)

# Novità PANDUIT



## Panduit ha arricchito la gamma di connettori di potenza e messa a terra.

- Connettori di Potenza a compressione in rame
- Connettori a compressione e di messa a terra
- Accessori e prodotti in bronzo silicio e acciaio inossidabile

Questi nuovi prodotti completano le soluzioni Panduit dedicate al mercato dei main contractor e MRO. Le nuove soluzioni consentono di offrire ai clienti finali numerosi vantaggi installativi e competitive e includono anche la serie MLT in acciaio per l'identificazione, come le targhette in acciaio con stampa a rilievo, capicorda, gli accessori per la sicurezza industriale, gli accessori per antiabrasione, le fascette e altri accessori per l'installazione e la gestione del cavo.

### Scarica la guida :

[https://www.youtube.com/watch?v=XxPMS2YH2tA&mkt\\_tok=eyJpIjoiWIRBM1pqYzROVE5sTVRkbClInQioiJTaGRxWUhNYVBjaXpUOWVScmwyb0hLVkRsT1wvVURudjh1Tzhr eDNYRWk5M0RRdjZUQ2JyQTJTcG5ZNUZUZDZ6eHRKRGS5 emhoY1IGVEIwNEFIQmV6R1E9PSJ9](https://www.youtube.com/watch?v=XxPMS2YH2tA&mkt_tok=eyJpIjoiWIRBM1pqYzROVE5sTVRkbClInQioiJTaGRxWUhNYVBjaXpUOWVScmwyb0hLVkRsT1wvVURudjh1Tzhr eDNYRWk5M0RRdjZUQ2JyQTJTcG5ZNUZUZDZ6eHRKRGS5 emhoY1IGVEIwNEFIQmV6R1E9PSJ9)



## Wall Mount Splice Enclosure

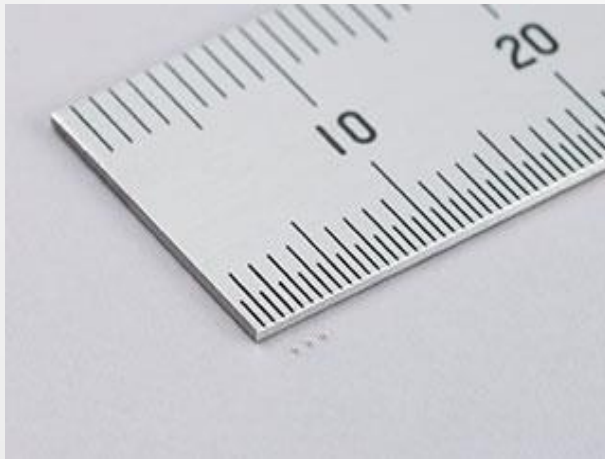
Grazie alla soluzione ottica HD Flex per sottopavimento, i vostri clienti avranno la possibilità di collocare fino a 288 porte in fibra ottica, per un totale di 576 fibre. Questo contenitore aiuta a risparmiare spazio su rack perchè consente l'installazione di patch panel nel sottopavimento, riducendo così la congestione nei rack e negli armadi dove si creerà più spazio per l'installazione di altre apparecchiature di rete. Infine, il montaggio senza l'utilizzo di attrezzi riduce ulteriormente i tempi di installazione fino al 50% rispetto a soluzioni simili.

- Possibilità di installare fino a 288 porte in fibra ottica, che significa un totale di 576 fibre.
- Tempi di installazione ridotti del 50%

### Guarda il video :

[https://www.youtube.com/watch?v=XxPMS2YH2tA&mkt\\_tok=eyJpIjoiWIRBM1pqYzROVE5sTVRkbClInQioiJTaGRxWUhNYVBjaXpUOWVScmwyb0hLVkRsT1wvVURudjh1Tzhr eDNYRWk5M0RRdjZUQ2JyQTJTcG5ZNUZUZDZ6eHRKRGS5 emhoY1IGVEIwNEFIQmV6R1E9PSJ9](https://www.youtube.com/watch?v=XxPMS2YH2tA&mkt_tok=eyJpIjoiWIRBM1pqYzROVE5sTVRkbClInQioiJTaGRxWUhNYVBjaXpUOWVScmwyb0hLVkRsT1wvVURudjh1Tzhr eDNYRWk5M0RRdjZUQ2JyQTJTcG5ZNUZUZDZ6eHRKRGS5 emhoY1IGVEIwNEFIQmV6R1E9PSJ9)

# Novità MURATA



## Murata Develops the World's First Multilayer Ceramic Capacitor

Murata Manufacturing Co., Ltd. has developed the GRM011R60J104M, the world's first multi-layer ceramic capacitor\*1 to feature a maximum capacitance of 0.1 $\mu$ F in 008004 inch size (0.25x0.125mm). Mass production of this new product is scheduled to begin in 2020. As smartphones supporting 5G become more widespread and devices such as wearable devices become increasingly multifunctional and more compact, the demand for smaller and higher density electronic circuitry is growing. Among the components employed in this circuitry, multi-layer ceramic capacitors are essential for electronic devices and are used for a wide range of applications such as in smartphones and wearable devices. As the high end smartphones are equipped with around 800 to 1,000 capacitors, there is a considerable need for such components to be made even more compact.

<https://www.murata.com/en-eu/products/info/capacitor/mlcc/2019/1205>



## Murata announces world's smallest LoRa®-based module with significantly reduced current consumption

Murata announces a new LoRa®-based module that, at just 10.0 mm x 8.0 mm x 1.6 mm, is the smallest available in the world today. Suitable for a wide range of high-volume applications where small size, long range, extended battery life, security and a competitive price point are requirements. Based upon a second-generation Semtech SX1262 radio frequency IC (RFIC), the Type 1SJ LoRa module also features an open STM32L0 microcontroller (MCU) from STMicroelectronics along with an RF switch and 192kB of Flash memory and 20kB of RAM. This extensive memory provision ensures that sufficient resources are available for the application layers.

<https://www.murata.com/en-eu/products/info/connectivitymodule/lpwa/2020/0129>



# Novità SEMIKRON

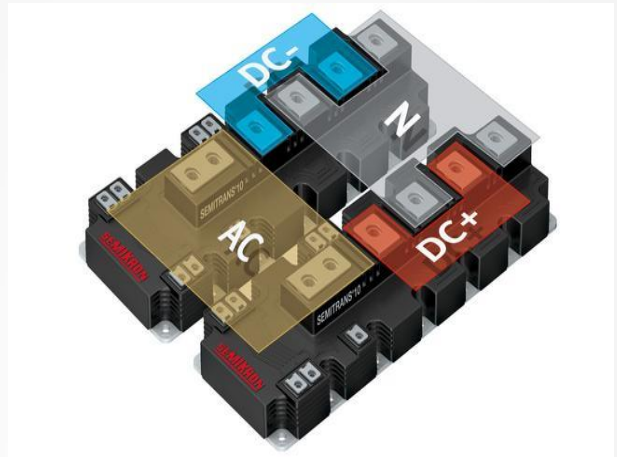


## IGBT Generation 7

The generation 7 IGBTs represent the latest IGBT chip technology. This new generation is specifically designed to match the requirements of motor drive applications. The IGBTs come with a significantly lower forward voltage drop and deliver optimised switching performance. Thanks to roughly 25% smaller chips, higher nominal currents can fit into existing power module packages.

In application, the IGBT 7 provides reduced power losses or increased maximum output power and power density. This translates into lower system costs. As to motor drives, the generation 7 IGBT will initially be introduced into conventional drive topologies: CIB (Converter-Inverter-Brake), sixpack and half-bridge configurations. For low and medium power drives, MiniSKiiP and SEMITOP E1/E2 are the first available choice. For higher power classes IGBT 7 is available in SEMiX 3 press-fit and SEMiX 6 press-fit. More power modules are to follow.

<https://www.semikron.com/innovation-technology/igbt-generation-7.html>



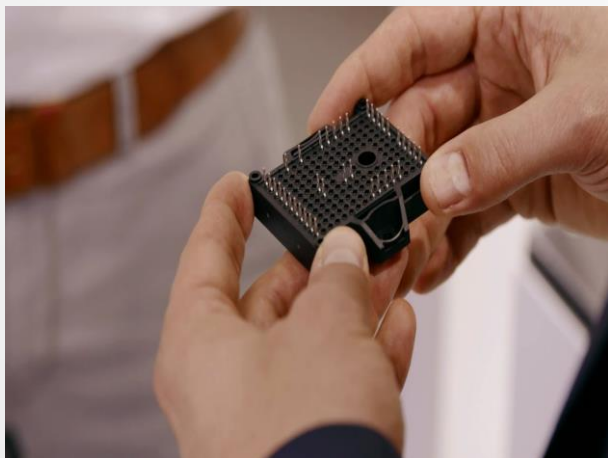
## 3-Level Power Modules

SEMIKRON 3-level power modules are the right choice whenever the quality of a voltage output signal is important in application. Using 3-level topologies lowers the requirements for output filtering since the line-to-line output voltage contains less harmonic distortion with the same switching frequency, resulting in lower filter and system costs.

A further advantage is the reduced inverter losses which boosts overall system efficiency. SEMIKRON boasts over ten years of experience in 3-level applications, providing 3-level solutions in NPC, TNPC and ANPC topologies in a variety of packages and contact technologies.

<https://www.semikron.com/innovation-technology/3-level-modules.html>

# Novità SEMIKRON



## Silicon Carbide Power Modules

SEMIKRON's hybrid and full silicon carbide power modules combine the benefits of proven industry standard power modules with SEMIKRON packaging technologies. Thanks to various packaging optimizations, all the benefits that silicon carbide offers can be fully exploited.

A low module commutation inductance allows for full speed switching of SiC MOSFETs. The higher switching speeds can be converted into higher switching frequencies, resulting in smaller magnetic filter components. At the same time the switching losses can be reduced, increasing system efficiency. Sophisticated materials and packaging technologies minimize the thermal resistance of the chip to the heatsink, enabling higher power densities.

<https://www.semikron.com/innovation-technology/silicon-carbide-power-modules.html>



## 1500V Solar Applications

An increase in the DC voltage in your solar applications of up to 1500VDC enables a significant reduction in system costs as well as the optimization of annual energy production. To comply with these challenging conditions, SEMIKRON offers a comprehensive product portfolio for your 1500V photovoltaic inverter: starting from power modules in 2-level and 3-level topologies to high-power SKiiP 4 IPMs and ready-to-use power stacks – we are your partner at all integration levels. Within a wide power range, SEMIKRON provides power modules for low-power string inverters up to multi megawatt central inverter units – meeting the strictest of quality and reliability requirements. Complete power stacks in different topologies and power ranges are available to guarantee fastest possible market entry.

<https://www.semikron.com/innovation-technology/1500v-solar-applications.html>

# Novità VISION

## Is your microscope a pain in the neck?



**679,350 lavoratori soffrono di disturbi muscoloscheletrici causati dal loro lavoro**

Le postazioni di lavoro ergonomiche contribuiscono a ridurre notevolmente le tensioni muscoloscheletriche cosa che avviene soprattutto agli operatori che usano i microscopi.

Registrati al nostro webinar 'Microscopy, work and performance' e scopri come creare la configurazione ideale per la tua postazione di lavoro.

Stiamo collaborando con il Robens Institute, consulenti di fama mondiale in materia di ergonomia, per discutere come i principi dell'ergonomia possono essere utilizzati per progettare una postazione di lavoro che offra:

- Sicurezza
- Efficienza
- Facilità d'uso
- Flessibilità
- Efficacia

**Unisciti a noi Giovedì 26 Marzo alle 16.30 e scopri come rendere più ergonomica la tua postazione di lavoro!**

[https://www.visioneng.com/resources/webinars/ergonomics\\_microscopy\\_work\\_performance?Ref=email&dm\\_i=GMA,6RJAS,L386DK,R1RFO,1](https://www.visioneng.com/resources/webinars/ergonomics_microscopy_work_performance?Ref=email&dm_i=GMA,6RJAS,L386DK,R1RFO,1)

# Novità VISION

It's  
**TRADE-IN  
TIME!**



Se hai un sistema di misura o di ispezione con più di 6 anni, puoi **ROTTAMARLO** a condizioni vantaggiose.



# Novità Produttori Vari



## Case Study with AceAxis and distribution partner 4Most

AceAxis developed a test system to analyze the digital bitstream (I/Q data) on the fiber interface between the BBU and RRH (Remote Radio Head) to measure the effects of Passive Intermodulation (PIM). Together with our distribution partner 4Most, nVent SCHROFF delivered several cases for this single board solution to AceAxis.

[C:\Users\luca.ricci\AppData\Local\Microsoft\Windows\INetCache\Content.Outlook\AMRDEVRO\email \(002\).mht](C:\Users\luca.ricci\AppData\Local\Microsoft\Windows\INetCache\Content.Outlook\AMRDEVRO\email (002).mht)



## ANALIZZATORI DI RETE E DEL CONSUMO ENERGETICO PROFESSIONALI

<http://qualistar.chauvin-arnoux.com/>



## MULTIMETRI/REGISTRATORI CON DISPLAY GRAFICO A COLORI

<https://www.chauvin-arnoux.it/sites/default/files/HLHBMFNE.PDF>

# Novità Produttori Vari



SCARICA IL NUOVO CATALOGO  
STRUMENTI 2020

[https://www.chauvin-arnoux.it/sites/default/files/documents/estratto\\_catalogo\\_2020\\_ed1\\_noprezzi.pdf](https://www.chauvin-arnoux.it/sites/default/files/documents/estratto_catalogo_2020_ed1_noprezzi.pdf)



## Jauch Quartz presents its new battery brand "Jauch"

Since entering the field of lithium battery technology in 1976, Jauch Quartz GmbH has made a name for itself as a competent developer of battery packs and battery solutions. From its roots as a distributor, the mid-sized company continues to supply its customers with battery cells from various manufacturers. Now, the company is taking the next step with the launch of its own battery brand "Jauch".

The new portfolio includes both primary and secondary batteries. Lithium-manganese dioxide batteries are available as button cells or cylindrical designs, and in various sizes. The portfolio also includes long lasting lithium thionyl chloride batteries with various tabbed versions. In the area of rechargeable batteries, the new brand includes a wide range of lithium-ion and lithium-polymer batteries in various dimensions.

[https://www.jauch.com/en-INT/current\\_news/introduction\\_of\\_own\\_brand\\_batteries](https://www.jauch.com/en-INT/current_news/introduction_of_own_brand_batteries)

# Novità Produttori Vari

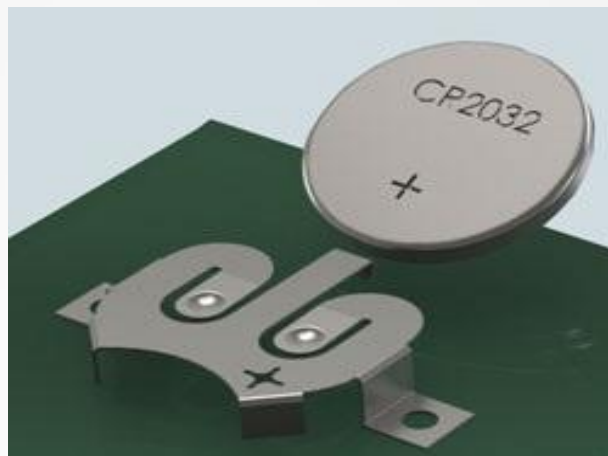


## UL Recognized Male PCB Quick Fit Terminals (Surface Mount and Thru-Hole Mount)

Innovative Male PCB quick fit terminals designed to hold up under repeated mating cycles are in stock and ready for delivery.

Available in Surface Mount as well as horizontal and vertical Thru Hole Mount configurations in bulk and continuous reel packaging. These space saving terminals are ideal for use in dense board configurations and offers easy access for connecting and disconnecting Quick-fit female terminals. Our unique Sturdi-Mount style is designed with "fingers" to provide increased PCB mounting strength and stability by maintaining the terminal's perpendicularity to PCB during and permanently after wave soldering.

<https://www.keyelco.com/category.cfm/Quick-Fit-Terminals/Terminals-Quick-Fit-Male-Sturdi-Mount-PCB/p/398/id/401>



## New Locking Low Profile Coin Cell Battery Retainers

Keystone has introduced a new series of SMT and THM, low profile, coin cell battery retainers designed for high shock and vibration applications.

Engineered with a locking flange, these new devices firmly secure batteries within the retainers, while assuring low contact resistance. The low profile design makes these rugged and lightweight retainers ideal for hand held products or applications that have severe shock applications.

Manufactured from Phosphor Bronze with the polarity clearly-marked, these coin cell retainers accept 1220, 1632 and 2032 cells from all major manufacturers. These holders are nickel-plated for durability, low contact resistance and high temperature soldering.

[https://www.keyelco.com/category.cfm/For-20mm-Dia-Cells/Locking-Coin-Cell-Retainers/p/405/id/851/c\\_id/624](https://www.keyelco.com/category.cfm/For-20mm-Dia-Cells/Locking-Coin-Cell-Retainers/p/405/id/851/c_id/624)