

# Indice Newsletter

(clicca sul logo per andare direttamente alla pagina)



# Nuova collaborazione con ITACOIL



Indice

Azienda leader nel settore che produce trasformatori e induttanze per elettronica dal 1981



**Trasformatori Risonanti Integrati con PFC**



**Induttanze di Modo Comune - Serie SCLE**



**Induttanze di Potenza e EMI - Serie SLD**



**Trasformatori per Alimentatori**



# Nuova collaborazione con E-SWITCH



Indice

Azienda americana con prodotti di qualità e una gamma di prodotti molto vasta



# Nuova collaborazione con LCD WORLD



Indice

Azienda con sede ad Honk Kong molto flessibile sulle quantità e con possibilità di customizzare i prodotti



Small & Middle Size TFT



High Luminance TFT



Bar TFT



Big Size TFT



# Sempre attenti alle tue esigenze...

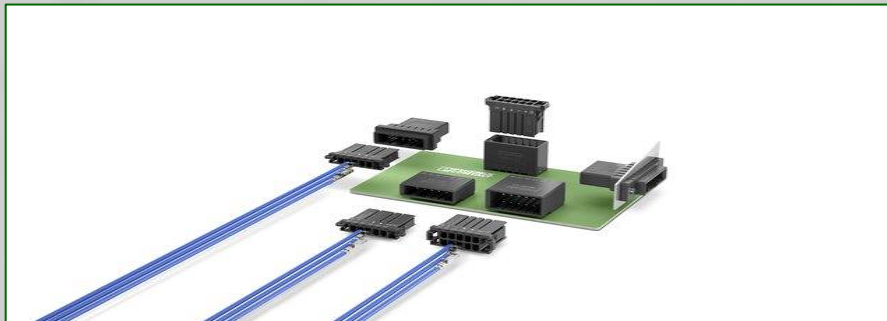


Indice

## Ricerca componenti critici tramite broker certificati

- Componenti attivi & passivi
- Connettori & Elettromeccanici
  
- Componenti garantiti
- Ricerca alternative
- Risposta entro 24/48h
- Consegne in 5-7gg.





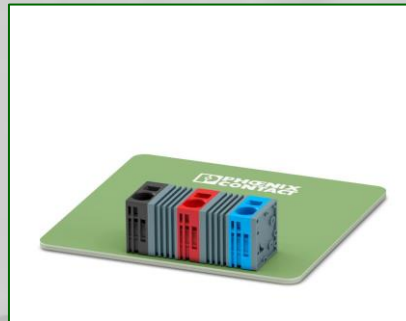
## Connettori per la produzione automatizzata

La nuova serie di connettori wire-to-board a crimpare CONNEXIS per confezionamenti di cavi di Phoenix Contact ottimizza la produzione automatizzata e garantisce velocità e precisione nella connessione dei circuiti stampati.

La siglatura ottica sul connettore rende inequivocabile l'assemblaggio nella propria produzione o sul campo. I clienti possono anche scegliere tra un'ampia gamma di stampe personalizzate. Per escludere innesti errati, Phoenix Contact propone connettori ed elementi di base codificati. È possibile scegliere fino a tre codifiche.

La gamma CONNEXIS è costituita da connettori ed elementi di base in direzione di collegamento orizzontale o verticale, nonché da passaparete. In questo modo è possibile realizzare connessioni di dispositivi così come connessioni volanti tramite connettori maschio e femmina. I contatti a crimpare sono disponibili per conduttori di AWG 28 fino ad AWG 14. Con i passi di 2,5 mm, 3,81 mm e 5,08 mm i connettori della serie D21, D31 e D32 sono ideali per diverse alimentazioni di segnale e a bassa tensione.

<https://www.phoenixcontact.com/it-it/prodotti/morsetti-e-connettori-per-circuiti-stampati/connettori-wire-to-board-per-confezioni>



## Il morsetto per circuiti stampati SPT modular vince due volte

Il morsetto per circuiti stampati SPT modular di Phoenix Contact ha conquistato le rispettive giurie in occasione di due cerimonie di premiazione.

<https://www.phoenixcontact.com/it-it/eventi-e-news/news/awards-il-morsetto-per-circuiti-stampati-spt-modular-vince-due-volte>



## Prese di ricarica lato infrastruttura modulari pluripremiate

Le prese lato infrastruttura CHARX connect modular di tipo 2 di Phoenix Contact consentono di combinare liberamente tutti i componenti grazie al loro sistema modulare

<https://www.phoenixcontact.com/it-it/eventi-e-news/news/prese-di-ricarica-lato-infrastruttura-modulari-principio-modulare-pluripremiato>



## Alimentatori con interruttore di protezione integrato

L'alimentatore Trio Power da 24 V di Phoenix Contact definisce un nuovo standard nella costruzione di macchine. La soluzione Plug and Play per il quadro elettrico...

<https://www.phoenixcontact.com/it-it/eventi-e-news/news/alimentatori-con-interruttore-di-protezione-integrato>



## Custodia da esterno di grande volume per il funzionamento affidabile di sistemi di dispositivi autosufficienti

<https://www.phoenixcontact.com/it-it/eventi-e-news/news/custodie-da-esterno-di-grande-volume-per-il-funzionamento-affidabile-di-sistemi-di-dispositivi-autosufficienti>



Indice



**Compact SPC 4 series PCB connectors**  
Three versions for full flexibility in design

## La nuova serie di connettori per circuiti stampati SPC 4 di Phoenix Contact consente di risparmiare spazio e costi di produzione grazie al design orientato al cliente.

Con un passo di soli 6,35 mm, i connettori per circuiti stampati della serie SPC 4 ora occupano ancora meno spazio sul dispositivo. In combinazione con l'innovativo contatto con la schermatura, la progettazione personalizzata apre una gamma completamente nuova di opzioni di design. SPC 4 consente di ridurre i costi di produzione grazie agli elementi di base THR, con i quali è possibile realizzare un equipaggiamento automatizzato. Inoltre, questa serie ben studiata ha una saldabilità di tipo reflow. La collaudata connessione Push-in facilita l'installazione e consente di utilizzare conduttori di grandi dimensioni fino a 4 mm<sup>2</sup>. Grazie alla protezione da contatto estesa sull'elemento di base e sul connettore, il connettore offre anche un valore aggiunto in termini di sicurezza.

<https://www.phoenixcontact.com/it-it/connettori-per-circuiti-stampati-spc-4>



## 40 anni di protezione contro la sovratensione

Phoenix Contact è uno dei principali produttori mondiali di scaricatori di fulmini e scaricatori di sovratensione, da 40 anni.

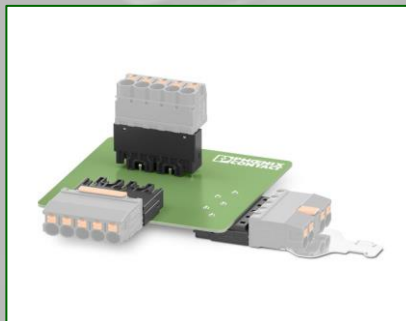
<https://www.phoenixcontact.com/it-it/eventi-e-news/news/40-anni-di-protezione-contro-la-sovratensione>



## Connettori board-to-board fino a 28 GBit/s

Phoenix Contact consente ora velocità di trasmissione dati fino a 28 GBit/s con i nuovi connettori board-to-board della serie FINEPITCH FR, con un passo di 1,27 mm.

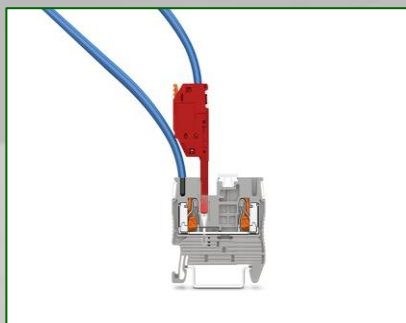
<https://www.phoenixcontact.com/it-it/eventi-e-news/news/news/connettori-board-to-board-fino-a-28-gbits>



## Elementi di base compatti della serie PC 4 per la saldatura automatizzata

Per consentire un'elevata automatizzazione della produzione, Phoenix Contact con la serie PC 4 offre un elemento di base compatto.

<https://www.phoenixcontact.com/it-it/eventi-e-news/news/elementi-di-base-compatti-della-serie-pc-4-per-saldatura-per-rifusione-automatizzata>



## Connettori con tecnologia Push-in a leva

Una novità di Phoenix Contact è rappresentata dai connettori di servizio e a presa con tecnologia Push-in a leva.

<https://www.phoenixcontact.com/it-it/eventi-e-news/news/news/connettori-con-tecnologia-push-in-a-leva>



Indice

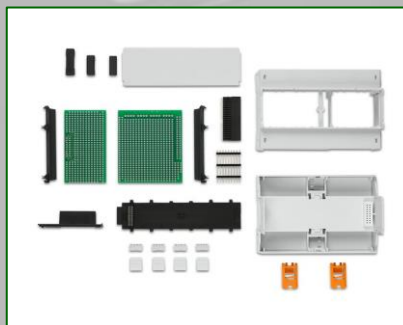


## Connettori per circuiti stampati con l'innovativa tecnologia Push-X

**Il connettore per circuiti stampati XPC 1,5 di Phoenix Contact convince per la connessione a innesto diretto tramite Push-X e consente quindi di collegare rapidamente e senza utensili diversi tipi di conduttori e sezioni.**

Secondo il principio della trappola per topi, il conduttore viene catturato semplicemente inserendolo nel connettore. Tramite contatti di bloccaggio, conduttori rigidi e flessibili, con o senza puntalino, vengono collegati con affidabilità a lungo termine. Durante l'inserimento nel vano di bloccaggio, il conduttore urta l'elemento di sgancio, che sblocca la molla di contatto con una minima applicazione di forza. La molla di contatto precaricata blocca quindi in modo permanente il conduttore con una forza definita. Un segnale acustico di sgancio e la modifica della posizione del tasto di sblocco arancione ad alto contrasto confermano la connessione sicura dei conduttori. La tecnologia di connessione senza utensili riduce i tempi di montaggio e consente il cablaggio automatizzato. Lo sbloccaggio del conduttore e il contemporaneo precarico della molla di contatto avvengono tramite il tasto di sblocco. Il connettore per circuiti stampati XPC 1,5 è compatibile con il programma Combicon con passo di 3,5 mm di Phoenix Contact. Ne derivano numerose opzioni di combinazione che coprono diverse varianti di applicazione.

<https://www.phoenixcontact.com/it-it/eventi-e-news/news/connettori-per-circuiti-stampati-con-innovativa-tecnologia-push-x>



## Morsetti innestabili con sistema

Le morsettiere COMBI innestabili di Phoenix Contact hanno una zona a innesto standardizzata.

<https://www.phoenixcontact.com/it-it/eventi-e-news/news/morsetti-innestabili-con-sistema>

## IO-Link Safety: il nuovo standard

La tecnologia IO-Link consente una trasmissione dei dati sicura e ininterrotta dal livello di controllo al collegamento di sensori e attuatori di sicurezza nel campo.

<https://www.phoenixcontact.com/it-it/eventi-e-news/news/io-link-safety-il-nuovo-standard>

## Kit di custodie per la protezione completa e il collegamento elettrico

Le custodie per l'elettronica garantiscono la sicurezza e la protezione dell'elettronica

<https://www.phoenixcontact.com/it-it/eventi-e-news/news/kit-custodie-per-la-protezione-completa-e-il-collegamento-elettrico-di-diversi-circuiti-stampati>

## Cavi di ricarica in AC compatti, ridotti all'essenziale

La nuova famiglia di cavi di ricarica Charx connect eco di Phoenix Contact si concentra sulla ricarica sicura dei veicoli elettrici.

<https://www.phoenixcontact.com/it-it/eventi-e-news/news/kit-custodie-per-la-protezione-completa-e-il-collegamento-elettrico-di-diversi-circuiti-stampati>



Indice



APPLICATION

# The Future of E-mobility, Expertly Engineered

Discover how our high-voltage HIVONEX connector and charging solutions are enabling E-mobility development across the Industrial and Commercial Transportation industry.



Indice



POWERTUBE CONNECTORS

## The Future of E-mobility, Expertly Engineered

Discover our HIVONEX connector and charging solutions purpose-built for the most extreme environments, adapting to every high-voltage applications.



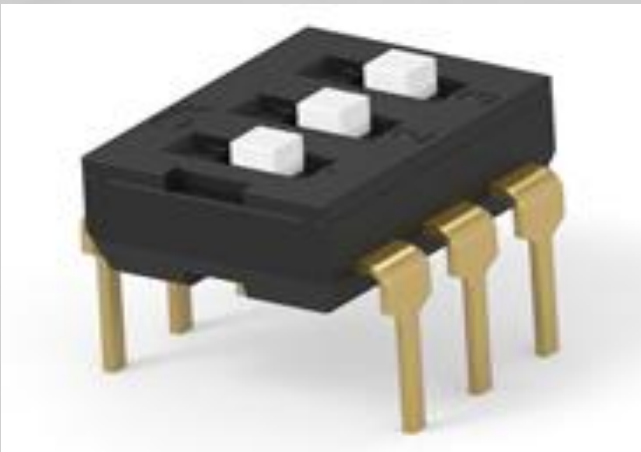
POWERTUBE  
CONNECTOR  
SERIES

## PowerTube High Voltage Connector (English)

Discover our new PowerTube high-voltage connector system built to handle large electrical loads (up to 580 A continuous current — depending on wire size and temperature — and 1000 V).



SCARICA IL  
CATALOGO  
COMPLETO



## Alcoswitch Next Generation Dip Switch – ADE & ADF Series

- High pressure contacts to omit the need for a tape seal.
- Smaller dimensions requiring less PCB space.

TE Connectivity's (TE) ALCOSWITCH Next Gen. DIP switch ADE and ADF series are designed for space-saving and streamlined manufacturing with high contact pressure allowing for aqueous cleaning without the need for tape sealing. The ADE and ADF series are available in through-hole and surface-mount options. Style of actuators are based on series: ADE with extended actuators, ADF with flush actuators. ADE/ ADF are available in both tube and tape/reel packaging options.

[VIEW INFORMATION SHEET](#)

## Heavy Duty Sealed Connector Series

- An expanded product family portfolio 2 position Group A to 18 position Group E
- Increased density with smaller-sized MCON 1.2 contact system in a single row cavity block

As density and power demands increase within the industrial and commercial transportation industry, TE Connectivity (TE), a world leader in connectivity and sensors, has expanded its Heavy Duty Sealed Connector Series to include more than half a dozen new products. Heavy Duty Sealed Connector Series is one of the largest offerings of sealed connectors and is continuing to grow and innovate. The new offerings meet customer demand for grounding, power distribution and sensor interfaces.

[VIEW INFORMATION SHEET](#)



## SDE Crimp Commercial Tooling Platform

- SDE die sets complete the tool's versatility by incorporating a standard locator or flip locator for terminal placement and wire brush control. (Only available on select models.)
- The rounded upper jaw design is engineered for increased strength and even distribution of force.

TE combined all the features pioneered in the original PRO-CRIMPER hand tools with the versatility of an even more robust design to create the revolutionary SDE Crimp commercial tool system. SDE Crimp minimizes the need for multiple types of hand tools thanks to its Standard Die Envelope (SDE) die sets, which are easily interchangeable from manual to power-assisted tools depending on your needs...

[VIEW INFORMATION SHEET](#)



## 5G Phantom No Ground Plane Required Antennas

- Ground Plane Independent
- Global 4G/5G coverage up to 7125 MHz
- 617-7125 and 698-7125 MHz Options

The 5G Phantom NGP (No Ground Plane) antenna series cover either 617-7125 or 698-7125 MHz in a ground plane independent format. Offering global cellular coverage, without the need for a fixed ground plane, even for regions where the lower 600 MHz band is required. They deliver high levels of average efficiency, over 95% up to 4200 MHz, and gain up to 8.0 dBi in an IP67-rated, compact form factor.

[VIEW INFORMATION SHEET](#)



## MULTI-BEAM Lite Power Connectors

- Lower profile and smaller size allow for better airflow to the rest of the board components, while saving valuable PCB real estate.
- Number and placement of power and signal contacts enable greater design flexibility in a wider variety of applications.
- Environmentally friendly manufacturing process with sustainability in mind.
- Large portfolio of solutions with the ability to support customization, allows for a high degree of supply chain resilience and stability.

[VIEW INFORMATION SHEET](#)



## New Single Pair Ethernet (SPE)





## Corcom Line Reactors Single Phase Line Reactor

- **Copper windings provides high conductivity and relatively low cost**
- **Protection of motor drive electronics**

Corcom RPQ series line reactors are designed to help protect AC/DC motor drives from power line disturbances and disruptions from the line side. While also offering a solution to harmonic distortion issues and power disturbances to your Variable Frequency Drives (VFD). High performance line reactors with copper winding deliver low losses to power harmonics mitigation solution to motor drive OEMs.

[VIEW INFORMATION SHEET](#)

## Sensor Flat Connectors

- **Offer versatile design with time-tested high vibration resistance sensor flat contact system for increased reliability**
- **Provide dependable connectivity with a large variety of engine sensor interfaces for almost any application**

As sensor technology is migrating more into Commercial vehicle industry, it is mandatory to ensure a safe operation in harsh environments. TE Connectivity (TE) has designed Sensor Flat 2-, 3- and 4-position connectors that offers a high reliability and vibration resistance with high-value solution for engine sensor connectivity. TE's sensor flat connectors provides a dependable connectivity with large variety of engine sensor interfaces for almost any application.

[VIEW INFORMATION SHEET](#)



## Universal MATE-N-LOK connectors secured with terminal position assurance

- **TPA device compatible with legacy housings**
- **Supports pin and socket contacts**
- **Meets UL 94 V-0 flammability standard**

Universal MATE-N-LOK plug and receptacle housings can now be secured with terminal position assurance (TPA) devices. The TPA devices are an inexpensive way to prevent costly rework by assuring the terminals are fully seated and cannot backout...

[VIEW INFORMATION SHEET](#)



## RJ45 Field Installable Cable Connectors

- Easy to use, reduces installation time significantly
- Installation without any special tool

TE Connectivity's (TE) latest industrial IP20 connector assembly RJ45 offers a robust and reliable solution for Industrial Ethernet applications. This RJ45 connector assembly is extending the family of field installable products that can be installed without special tool. The new Industrial IP20 connector assembly complies to the IEC 60603-7-1:2011 and IEC 60603-7-3 standard, supports an industrial temperature range and is available in a straight (180 deg.) and angle (90 deg.) version.

[VIEW INFORMATION SHEET](#)

## SUPERSEAL pro Sealed Connectors

- Enhance vibration resistance level with time-tested MCON 1.2 SWS terminal in compliance with commercial vehicle chassis application requirement
- Eliminate additional assembly with TPA (Terminal Position Assurance) pre-lock and enhanced front seal

SUPERSEAL pro connector provides a high-value solution for chassis applications. It is specially designed to deliver better reliability and boost performance in sealed inline applications for industrial and commercial vehicles operating in harsh environments.

...

[VIEW INFORMATION SHEET](#)



## Unmanned Power (UMP) Connectors

- Small form factor, high power up to 80 amps per contact

TE Connectivity's (TE) unmanned power connectors (UMP) are a family of power or mixed signal and power connectors that were designed to help provide a reliable contact interface that safely delivers power or power/signal to various parts of unmanned vehicles. These connectors can be used in other applications where high power in a small form factor is desired. They can be sealed in wire to wire format for added environmental protection.

[VIEW INFORMATION SHEET](#)



## HPC 200A Connector

- **One piece contact - Excellent temperature rise control**
- **Sensor integration - Enable intelligent safety monitoring**

HPC Series focuses on Battery Energy Storage System (BESS) to provide the high safety and reliability solution with one pole 200A/1500V high current connector. Bringing the one-piece molding contact, HPC 200A Connector provides excellent temperature rise control capability. Meanwhile, HPC 200A Connector installs with high performance temperature sensor (optional) to enable 24Hrs system safety monitor. The smart locking system with 180° in-line design, provides 360° rotation, 12 angles of locking with each 30° degrees, quick lock and press to release function to enable convenient and fast assembly of large volume connectors on site.

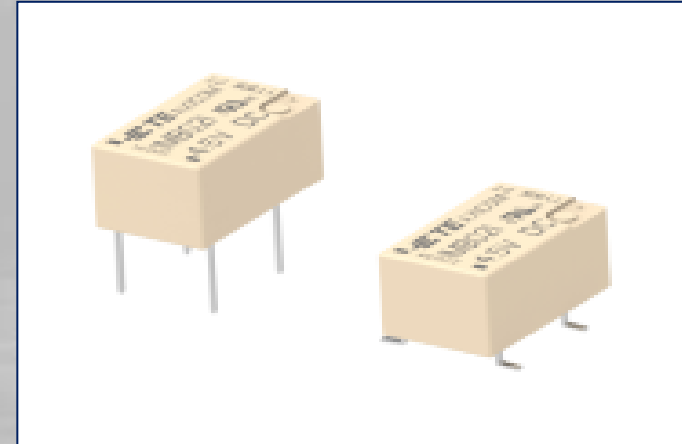
[VIEW INFORMATION SHEET](#)

## IMB High Load signal relays

- **Small and cost-effective applications**
- **Usability in closed / sealed / warm surroundings without needed additional cooling still guaranteeing performance levels**
- **Safety**

TE Connectivity (TE) introduces IMB High Load. This is an IM product extension focused on switching higher power load up to 400Vdc within the same form, fit and function of the existing IM relay. The product is tuned to switch power with larger power contacts at 85 degrees, strongly competing with MosFet switching capabilities at higher temperatures.

[VIEW INFORMATION SHEET](#)



## Economy Power 2.5 Surface Mount Headers

- **Support automated PCB assembly**
- **Retro-fit with existing 2.5mm connectors**
- **Meets global safety standards**

Economy Power 2.5 (EP 2.5) surface mount technology (SMT) headers are designed to help you incorporate automated processes into your printed circuit board (PCB) assembly. As compared to traditional through hole PCB headers, EP 2.5 SMT headers are better suited for automated pick-and-place assembly, require fewer processing steps, and support more efficient reflow soldering.

[VIEW INFORMATION SHEET](#)



Indice



## LUMAWISE ALR AA 2000EL Series

- Standalone device which will monitor ambient light levels and accurately switch a light source ON/OFF at fixed levels
- Ambient light levels detected by silicon photoelectric sensor

LUMAWISE ALR AA 2000E is an electronic version of TE's popular AA series button photocell. The button cell, wired in design, is a photocontrol solution for multiple luminaire form factors. The compact form is designed to be internally hardwired in the luminaire. The polycarbonate lens gives a discrete appearance as well as a tough construction. The device gives dusk and dawn control of incandescent and LED light sources. Via an electromagnetic relay rated for greater than 20k operating cycles.

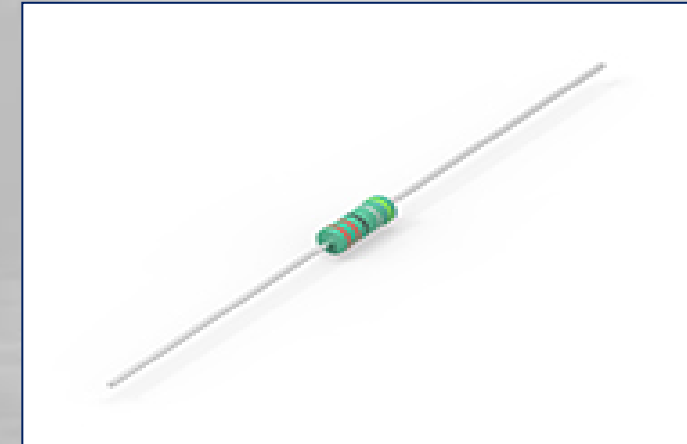
[VIEW INFORMATION SHEET](#)

## Wirewound Anti-Surge Resistors Type EP Series

- High temperature withstanding
- Space saving with higher power at smaller sizes

TE Connectivity is pleased to offer this wire wound axial leaded resistor. Robustly manufactured with high quality materials this resistor offers flame proof coating, and is designed and tested to withstand power surges of up to 12KV. In line with our commitment to increasing power to size ratio we are now also able to offer this series in extra-small size.

[VIEW INFORMATION SHEET](#)

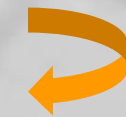


## DBA6171Cx - 5G Swivel Blade Antenna Family

- 5G Coverage
- Outdoor & Indoor Rated Versions
- Rigorously Tested

Introducing the new DBA6171Cx 5G hinged swivel dipole antenna family. Offering excellent performance from 617-7125 MHz and available in non-IP rated and IP67 formats for indoor or outdoor use.

[VIEW INFORMATION SHEET](#)



## High Voltage Contactors ECP 150B / 250B / 350B Series

- Allow 1500VDC bi-directional
- Global approvals for customer projects

TE Connectivity (TE) introduces the ECP150B / 250B / 350B series high-voltage DC contactor which is designed for control in high voltage environment in battery energy storage system, solar inverter and EV charging applications. It can be used in the 1500VDC voltage system and allow for bi-directional load. Hermetically sealed with ceramic sealing technology makes it safe and reliable.

[VIEW INFORMATION SHEET](#)

## EV single wall (EVSU) heat shrink: Superior high voltage protection for maximum performance

- Meet EV Orange Color
- 2:1 shrink ratio
- Flexible Design
- Robust & lightweight material design

The Acceleration of Electric vehicles into the everyday lives continues to drive technology changes and challenges to maintain the optimum level of performance, reliability, and safety...

[VIEW INFORMATION SHEET](#)



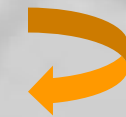
## Flexibility and Versatility from TE's AMP Micro CT Connectors

- Smaller footprint
- Efficiency optimizations
- Low applied cost

TE Connectivity's (TE) new AMP Micro CT connectors and cable assemblies can provide an economical wire routing solution for power or signal needs, optimizing printed circuit board space savings, efficiency improvements and superior performance.

[VIEW INFORMATION SHEET](#)





## VAL-U-LOK Plus Connectors With Integrated TPA

- **Integrated terminal position assurance (TPA)**
- **Robust latch with anti-snag feature**
- **Retro-fit with existing VAL-U-LOK connectors**

VAL-U-LOK PLUS connectors deliver secure connections, with simpler sourcing and assembly. These 4.20mm pitch connectors feature a one size fits all integrated terminal position assurance (TPA) device to secure contacts with fewer part numbers. Connector assembly is made easy with no TPA insertion step and a robust anti-snag latch preventing wire entanglement. VAL-U-LOK PLUS connectors mate with leading 4.20mm connectors on the market, allowing you to affordably retro-fit your existing design.

[\*\*VIEW INFORMATION SHEET\*\*](#)

## Corcom EVX Series High Voltage DC EMI Filters

- **Designed to handle high power from 75kW to 2.4MW Fast chargers.**
- **State of Art design with three High Voltage Levels (500V, 1000V, 1500V).**

New series of high voltage DC filter provides EMI attenuation for EV Charging Applications and designed to IEC/EN 61851-23 vehicle conductive charging system.

[\*\*VIEW INFORMATION SHEET\*\*](#)



## Mini AMP-IN Board-in Terminals

- **Compact and flexible design**
- **Excellent contact retention force**
- **Supports most common wire sizes**

TE Connectivity's Mini AMP-IN board-in terminals are a board-in solution designed to help you develop manually assembled, compact printed circuit board (PCB) systems. These terminals allow greater PCB design flexibility, as they mount directly to the PCB without a housing, taking up less space than soft shell wire-to-board connectors.

[\*\*VIEW INFORMATION SHEET\*\*](#)



## Alcoswitch HCP Series High Current Snap Action Switches

- Robust contacts and internal design allowing higher current carrying capability.
- Multiple actuator styles for design/application flexibility.

TE Connectivity HCP Series of High Current Snap Action Switches offer flexibility through various combinations of lever styles in a higher current rated switch. The new current rating options include 10, 16, 20, and 26 amp versions. These switches are designed to convert a mechanical action into an electrical one. This makes them very suitable for applications such as Home Appliances and Factory Automation as well as other domestic and industrial uses. TE's Snap Action switches are designed to industry standard sizes, making them extremely suitable for use in existing designs. They are available with various contact styles to aid flexibility.

[VIEW INFORMATION SHEET](#)

## Push Grip Wire Connectors

- Low insertion force for fast and easy connections
- Transparent housing to visually verify fully seated wire conductor insertion depth

TE Connectivity (TE)'s latest generation Push Grip Wire Connectors are insulated splice connectors for electrical installations. These poke-in wire splice connectors accept wire strip lengths ranging from 3/8 - 1/2" [9.5 - 13mm] and provide visual termination of 22 - 12 AWG solid, rigid stranded and tin bonded stranded wires. These splices are color coded for easy identification, compact in size to fit into tight spaces and the wires are extractable, if required.

[VIEW INFORMATION SHEET](#)



## AMPLIMITE D-Sub Connector Assemblies & Accessories

- Extensive selection of AMPLIMITE connectors
- Ruggedized hardware and accessories

TE Connectivity (TE) offers one of the broadest, most versatile portfolios of D-subminiature connectors in the market with unrivaled engineering support to address our customer's needs. Our complete line of D-Subminiature connectors ranges from right angle and vertical PCB connectors to the AMPLIMITE .050 series D-Sub connectors. Our D-Subminiature connector portfolio is designed for multiple applications, along with specialized accessories that will provide any customer with an economical D-Sub solution for any complex applications.

[VIEW INFORMATION SHEET](#)



## zSFP+ (SFP28/56) Connectors and Cages

- Support both 28G NRZ and 56G PAM-4 signal
- Maximize board space

TE Connectivity's (TE) broad SFP portfolio can provide comprehensive and customizable solutions to address your I/O interconnects. They are designed to transfer data at speeds of up to 28G NRZ and 56G PAM-4 for hyperscale data centers and networking switch applications.

[VIEW INFORMATION SHEET](#)

## PowerTube Connector Series

- High performance in every environment with circular 360° shielding and engine-level vibration performance
- Reduced total applied system cost enabled by simple cable routing and connector assembly
- Modular and scalable with 180° and 90° orientations and up to 3 positions per connector

TE Connectivity's PowerTube connector series is the right choice for high power applications in hybrid and electric industrial and commercial vehicles. Newest addition to our ever-growing HIVONEX connectors and charging solutions, the PowerTube connector series is built to handle large electrical loads (up to 580 A continuous current and 1000 V)

[VIEW INFORMATION SHEET](#)



## Mini AMP-IN Board-in Terminals

- 5G/Cellular or 5G/Cellular + GNSS options
- Provides 'Failover' support
- 2x2 MIMO for 4G/5G

Our new 2x2 RP20 max MIMO antennas provide high-performance connectivity for current and emerging 4G and 5G frequencies over the 617-960 and 1427-6000 MHz frequency ranges, when used in conjunction with a cellular router or gateway.

...

[VIEW INFORMATION SHEET](#)

# Nuova tecnologia HARTING AG 3D-MID

(guarda i video)



Indice



<https://www.youtube.com/watch?v=q1RUU6saxys&t=21s>



<https://www.youtube.com/watch?v=DcjGGJlc81I&t=62s>

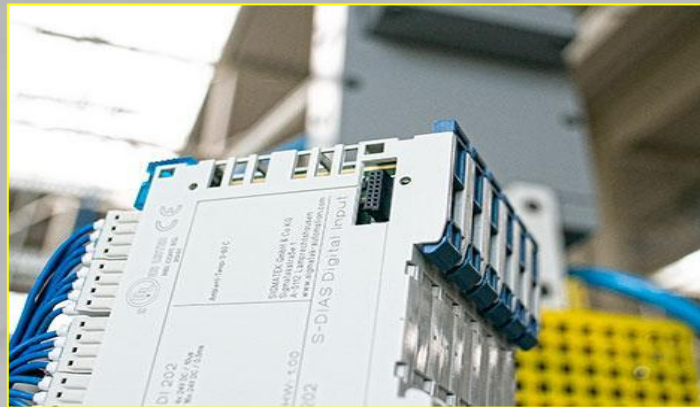


## Switch Ethernet Industriali

Gli switch Ethernet non gestiti della serie Ha-VIS eCon offrono ora ulteriori nuovi modelli con porte per cavi in fibra ottica e RJ45 per consentire una configurazione e un ampliamento efficiente delle reti Ethernet.

Le reti dei moderni stabilimenti produttivi diventano sempre più complesse. Gli switch Ethernet non gestiti della serie Ha-VIS eCon offrono ora ulteriori nuovi modelli con porte per cavi in fibra ottica e RJ45 per consentire una configurazione e un ampliamento efficiente delle reti Ethernet. Le serie Ha-VIS eCon 2000 e 3000 consentono di reagire in maniera ottimale in qualsiasi condizione di spazio e di utilizzo.

<https://www.harling.com/IT/it/soluzioni/switch-ethernet-non-gestiti/>



## Connettore da PCB har-flex® HARTING

Scoprite il connettore da PCB har-flex® di HARTING.

Grazie al design miniaturizzato e alla sua versatilità (versioni ibride, potenza, segnale e card edge), i produttori di apparecchiature sanno di avere a loro disposizione un prodotto che permette loro di configurare la soluzione migliore, tenendo in considerazione il numero di poli e le diverse configurazioni e combinazioni possibili per la connessione di due o più PCB.

L'ampia gamma di connettori har-flex® offre al progettista numerose soluzioni per soddisfare le esigenze di inserimento del maggior numero possibile di schede elettroniche all'interno di un dispositivo.

<https://www.harling.com/IT/it/soluzioni/connettore-pcb-har-flex-it>



## Soluzioni di ricarica per la mobilità elettrica

Nel mercato in forte crescita dei sistemi per infrastrutture di ricarica destinate alla mobilità elettrica siamo un partner ambito per le sue soluzioni personalizzate di ricarica altamente efficienti.

HARTING Automotive progetta e produce componenti per la ricarica di veicoli elettrici e ibridi plug-in. I nostri prodotti dispongono di tutte le omologazioni e dei certificati rilevanti per i relativi settori di mercato e per tutti i requisiti normativi del mondo.

<https://www.harling.com/IT/it/soluzioni/soluzioni-ricarica-ia-mobilit%C3%A0-elettrica>



Indice



## Push-Pull Circular Connector Y-Circ P - Designed and Manufactured in Germany

- Different connector series in IP50 and IP68
- Innovative details for optimized plug systems
- Different sizes, pin counts and contact types
- Customised pin layouts
- Pin layout for high data rates like Cat6A
- Available with lanyard release aid

With the Y-Circ P series Yamaichi Electronics offers an improved push-pull circular connector series. The push-pull series is designed, qualified and produced in Germany, which means fast reaction to the needs of our European customers. The high grade of vertical range of manufacturing ensures highest quality and short delivery times.

The product portfolio includes also various matching accessories for the Y-Circ P circular connector series as well as cable assemblies.

In this video you will discover all the advantages of the Y-Circ P series.

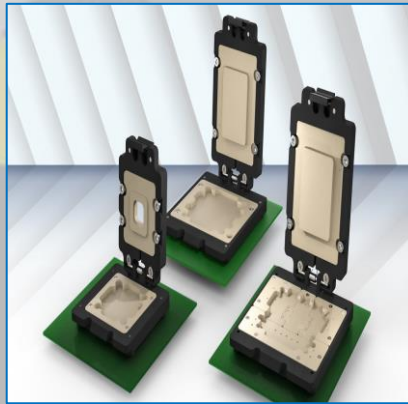
<https://www.yamaichi.de/connector-solutions/push-pull-circular-connector-y-circ-p>



## Y-CMC: The new series for camera connections in the automotive sector

- Space-saving design
- Tolerance compensation
- IP69K - splash water protected
- High-speed function

<https://www.yamaichi.de/connector-solutions/inputoutput-connectors/y-cmc-camera-module-connector>



## Open Standard Module – OSM Test Adapter in Four Different Sizes

- Modular design for easy handling and maintenance
- Double-sided spring-loaded contacts for solder-free contacting of the adapter on the base or evaluation board
- Product-specific insert (pusher) in the cover for ideal force distribution and secure contacting

<https://www.yamaichi.de/about/news-events/detail/open-standard-module-osm-test-adapter-in-four-different-sizes>



Indice





## Cable Cleats Solutions

Panduit cable cleat solutions ensure cables remain contained in the event of a short circuit fault to minimize disruption and damage to personnel and property. Uniquely engineered for ease of installation and available in a range of applications and harsh environments, our cable cleats meet the needs of any project while providing on-the-job productivity, reliability, and safety.

<https://www.panduit.com/en/solutions/applications/cable-cleats.html>



## Pan-Steel® Stainless Steel Cable Ties

The Pan-Steel® System is an integrated line of stainless steel cable ties, banding, mounts, identification and installation tools. It offers industry-leading performance, including superior strength, durability, and cost-effectiveness.

<https://www.panduit.com/en/landing-pages/stainless-steel-cable-ties.html>



## Increase Productivity and Stay Organized with Cable Entry Systems

The Cable Entry Systems from Panduit offer a safe, organized method to transition both terminated and unterminated cables through enclosures and electrical equipment, providing strain relief while maintaining IP/NEMA ingress sealing ratings. These Cable Entry Systems offer the lowest total installed cost compared to traditional cable glands or cord grips, simplifying the installation and managing numerous cables in a very dense space. These design benefits provide up to 80% installation time and space savings.

<https://pages.panduit.com/cable-entry-systems>

# Murata amplia la gamma DC/DC – AC/DC Power Solution



Indice

HOME

**muRata**  
INNOVATOR IN ELECTRONICS

## Murata: AC-DC & DC-DC Power Solutions

### AC-DC converter Products

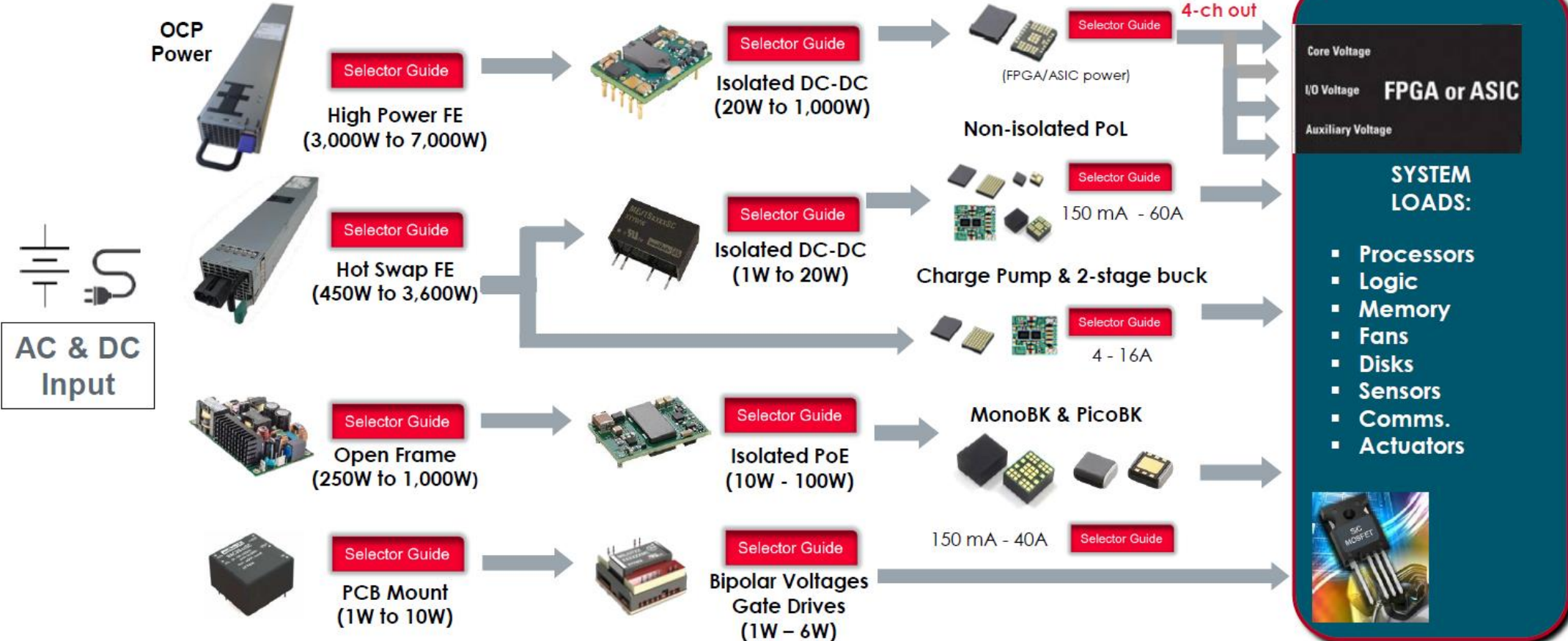
- Front-end, hot swappable, open-frame, PCB mount
- 1W up to 7,000W
- Industrial & Medical rated

### Isolated DC-DC converter Products

- Single, dual, and triple output
- Power from 0.25 to 1kW; currents from 0.02 to 50 Amps

### Non-isolated DC-DC POL Products

- DOSA compatible designs
- Discrete and module solutions
- Currents from 150mA to 60A







### Explore How the Latest RF and Microwave Innovations Can Accelerate Your Next Wireless Project at Murata's European Microwave Week Exhibition Stand

<https://www.murata.com/en-eu/news/event/2023/0719>



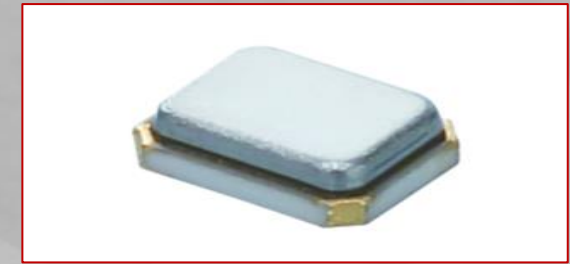
### See Murata demonstrate their innovative ultrasonic cleaning system and the latest vehicle radar solutions at AutoSens Brussels

<https://www.murata.com/en-eu/news/event/2023/0712>



### Murata Addresses Emerging Autonomous Driving Functions with Latest Drip-Proof Ultrasonic Sensor

<https://www.murata.com/en-eu/news/sensor/ultrasonic/2023/0626>



### Commercialized the High-Precision XRCGE\_FXA Series Automotive Crystal Unit in 2016 Size

<https://www.murata.com/en-eu/news/timingdevice/crystalu/2023/0619>



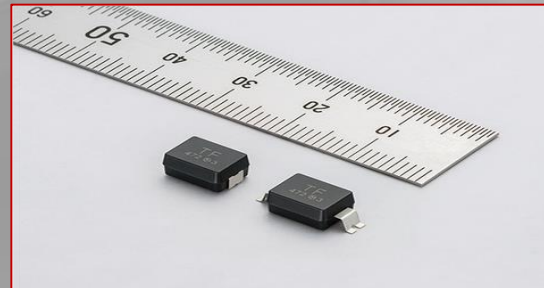
### Low Profile 2.0 mm Max./470 µF Capacitance Polymer Capacitor Commercialized

<https://www.murata.com/en-eu/news/capacitor/polymer/2023/0616>



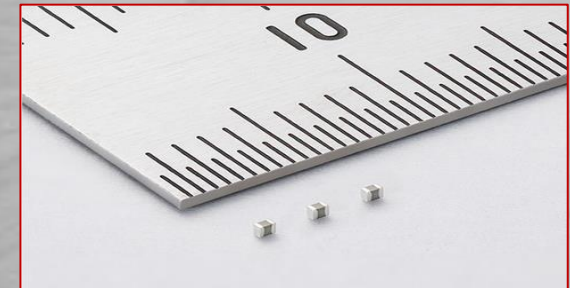
### Commercialized the 150°C Compatible XRCGA\_F\_A Series Automotive Crystal Unit

<https://www.murata.com/en-eu/news/timingdevice/crystalu/2023/0605>



### Compact MLCCs with Extended Creepage Distance Highlight Murata's Expertise in Passive Component Technology

<https://www.murata.com/en-eu/news/capacitor/ceramiccapacitor/2023/0525>

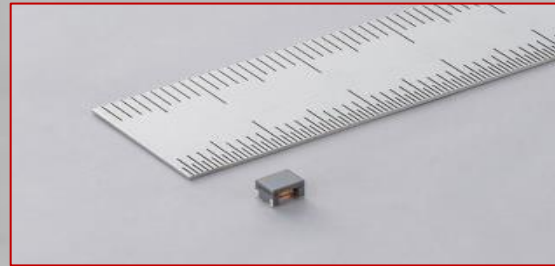
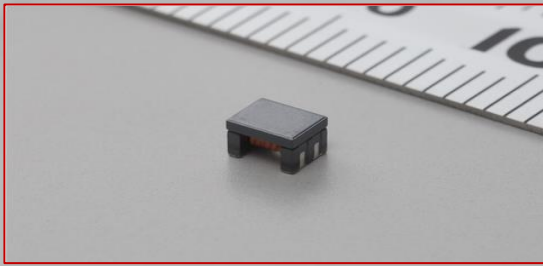


### New MLCCs from Murata Squeeze More Capacitance into Compact Format

<https://www.murata.com/en-eu/news/capacitor/ceramiccapacitor/2023/0426>



Indice



### **New Addition of Chip Common Mode Choke Coil Lineup with CAN FD Compatibility**

<https://www.murata.com/en-eu/news/emc/emifil/2023/0516>

### **Latest Wire Wound Chip Common Mode Choke Coils from Murata Exhibit Wideband Impedance Capabilities**

<https://www.murata.com/en-eu/news/emc/emifil/2023/0313>

### **Murata's Sensor and Wireless Connectivity Innovations Make Farming Smarter**

<https://www.murata.com/en-eu/news/sensor/soil/2023/0216>



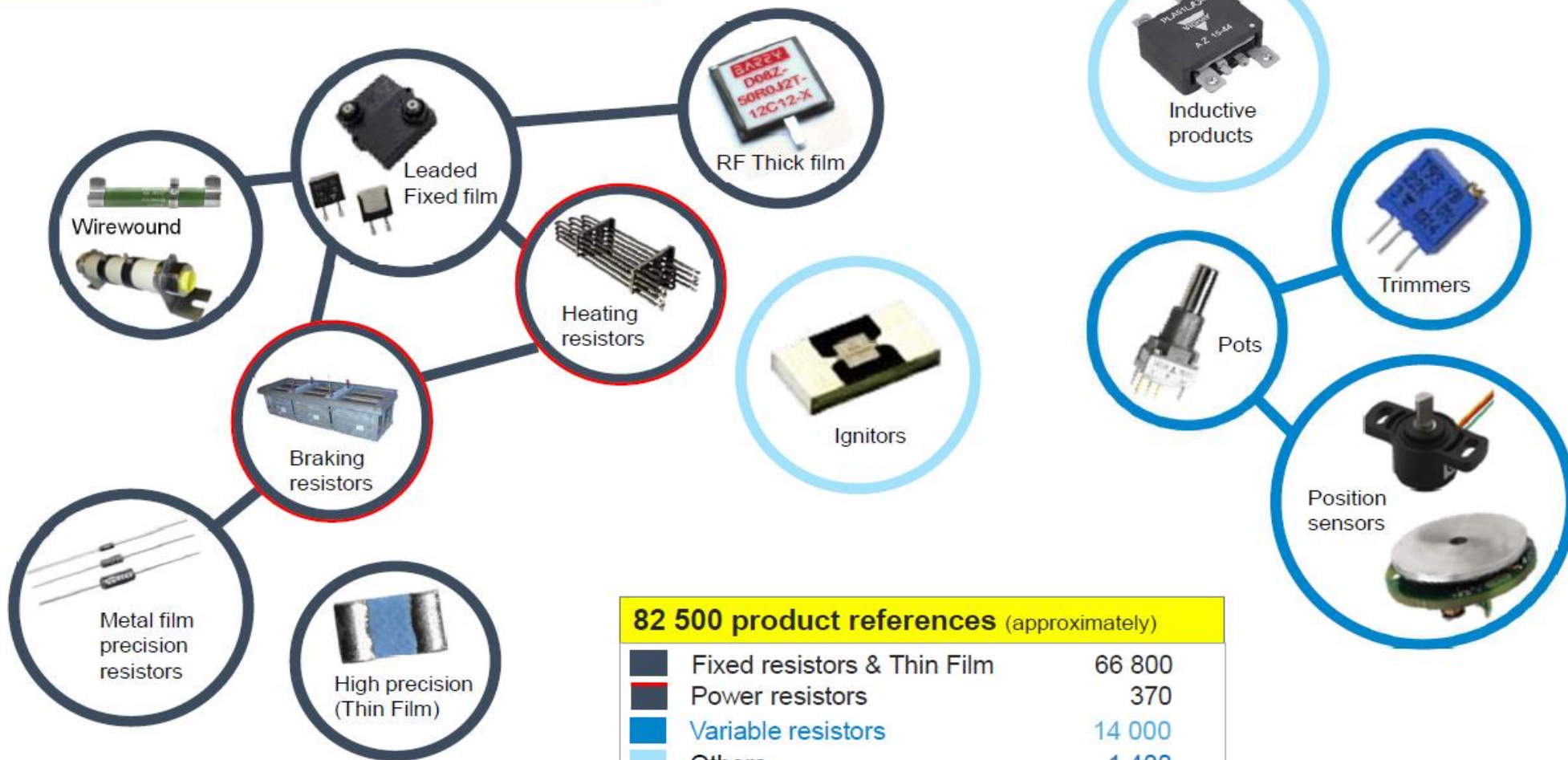
Indice

# Scopri le novità della gamma VISHAY - Sfernice



Indice

## Sfernice Resistors Portfolio



### 82 500 product references (approximately)

	Fixed resistors & Thin Film	66 800
	Power resistors	370
	Variable resistors	14 000
	Others	1 400



The DNA of tech™

# Nuova Piattaforma WX SMART...il futuro della saldatura



Indice

***Prenota subito la tua visita demo***



**Guarda il video**

<https://www.youtube.com/watch?v=DOK9vZGm0YM>



**Guarda il video**

[https://www.youtube.com/watch?v=Un-VIWo\\_0rM](https://www.youtube.com/watch?v=Un-VIWo_0rM)

## Nuova Promozione Sui Sistemi Di Filtraggio Zero Smog

## Prezzo Promozionale Sul Demo Kit Stagno Weller



Indice



**Richiedici un preventivo  
personalizzato**

**Prova subito la nuova lega  
saldante**



Indice

## NEW: Stratum 3 compliant TCXOs and VCTCXOs from Jauch Quartz

Jauch Quartz introduces a new series of temperature-compensated crystal oscillators and their voltage-controlled version. The devices offer Stratum 3 compliant short-term and long-term stability, making them suitable for use in demanding environments. All versions feature a free-run stability of  $\pm 4.6$  parts per million (ppm) over 20 years and frequency stability of  $\pm 0.28$  ppm in the extended temperature range up to  $+105^{\circ}\text{C}$ . In addition, this series of (VC)TCXOs features an excellent 24-hour holdover stability of  $\pm 0.37$  ppm max and superior Allan deviation (ADEV) of 0.1 parts per billion (ppb) typ. / 0.2 ppb max. at an averaging time of 1 second.

[https://www.jauch.com/en-INT/current\\_news/product\\_launch\\_jtsxx?utm\\_source=newsletter042023](https://www.jauch.com/en-INT/current_news/product_launch_jtsxx?utm_source=newsletter042023)

## Customer Success Story: A durable and certified battery for mBrainTrain's mobile EEG

mBrainTrain, a company based in Belgrade, is revolutionizing the possibilities for research into tiny signals in the brain. The company's EEG unit makes research possible in all environments outside the laboratory. The device is powered by a Jauch battery. You can read about what requirements the battery must fulfil and how our cooperation has taken place on our blog.

[https://www.jauch.com/blog/en/customer-success-story-a-durable-and-certified-battery-for-mbraintrains-mobile-eeeg/?utm\\_source=newsletter042023](https://www.jauch.com/blog/en/customer-success-story-a-durable-and-certified-battery-for-mbraintrains-mobile-eeeg/?utm_source=newsletter042023)

## Customer Success Story: The battery powered motorized positioning arm from Interventional Systems

During minimally invasive procedures, it is very important to work as precisely as possible. The motorized arm for positioning and holding medical devices from the Austrian company Interventional Systems (INS) supports doctors during these incredibly precise procedures.

The motorized arm is powered by a Jauch battery that has been certified for the company according to UN38.3 and IEC62133. You can find further information about this project in the case study on our Jauch blog.

[https://www.jauch.com/blog/en/customer-success-story-the-battery-powered-motorized-positioning-arm-from-interventional-systems/?utm\\_source=newsletter022023](https://www.jauch.com/blog/en/customer-success-story-the-battery-powered-motorized-positioning-arm-from-interventional-systems/?utm_source=newsletter022023)

# Vision presenta la 3° generazione del visore Mantis



Indice

***Prenota subito la tua visita demo***

## MANTIS

LO stereo microscopio usato da migliaia di clienti in tutto il mondo per le sue immagini di alta qualità e per una vasta gamma di applicazioni. Ergonomico e facile da usare.

- Immagini superbe e di grandi dimensioni – senza oculari
- Ergonomia superiore per una visione senza fatica
- Telecamera integrata



*Vision*  
ENGINEERING



# Nuovo modulo radio ultra flessibile MIPOT



Indice

<https://mip.mipot.com>



## FEATURES

### Flexible and Safe



#### High Radio Performance

The MiP series features the cutting edge technology for the radio chipset performance for Europe (+14 dBm) and USA (+20 dBm)



#### Multi protocols in one single chip

Our customers can choose from different solutions and mix of two or more protocols in one single MiP wireless module like: wM-Bus + LoRaWAN or LoRa + SigFox



#### LPWAN Protocols

wM-Bus, LoRaWAN, LoRa MiPot, LoRa Modem, Sigfox, MIoTy



#### Secure element

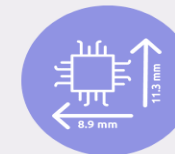
MiP includes advanced security features such as: secure areas hardware isolation, secure boot and a secure element as an option



#### Built-In-Up-To-Date IOT Stacks



#### World Wide SubGHz Frequency Bands



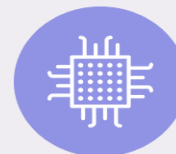
#### Extremely compact



#### Standard Peripheral Interfaces (UART, LPUART, SPI, I2C)



Scalable flash memory space available from 64 KB to 256 KB (single core or dual core)



LGA Form Factor



Free memory space for user application

